

KERANI HEIGHTS STAGE 4 PGG (PLUMPTON 2) PTY LTD

GENERAL NOTES:

SURVEY

- ALL LEVELS ARE TO AUSTRALIAN HEIGHT DATUM AND ALL COORDINATES ARE TO MAP GRID OF AUSTRALIA (MGA) 94, ZONE 55.
- ALL EXISTING SURFACE LEVELS SHOWN ON THE ENGINEERING DRAWINGS HAVE BEEN INTERPOLATED FROM A DIGITAL TERRAIN MODEL. THESE LEVELS HAVE BEEN USED AS THE BASIS FOR ALL ENGINEERING DESIGN AND DETERMINATION OF QUANTITIES AND ARE ACCURATE TO WITHIN $\pm 0.05\text{m}$.
- ALL WORKS TO BE CARRIED OUT IN ACCORDANCE WITH AS2124-1992 GENERAL CONDITIONS OF CONTRACT, THE ROAD & DRAINAGE SPECIFICATION, APPROVED MUNICIPALITY SPECIFICATIONS AND STANDARD DRAWINGS AND TO THE SATISFACTION OF THE SUPERINTENDENT AND THE MUNICIPAL ENGINEER OR HIS REPRESENTATIVE.
- ROAD CHAINAGES REFER TO ROAD CENTRELINES. CHAINAGES FOR INTERSECTIONS AND CUL-DE-SACS REFER TO THE LIP OF KERB
- EARTHWORKS**
 - THE LOCATION OF EXISTING SERVICES SHOULD BE DETERMINED BY THE CONTRACTOR PRIOR TO COMMENCING ANY EXCAVATION BY CONTACTING ALL LOCAL SERVICE AUTHORITIES. ANY EXISTING SERVICES SHOWN ON THESE DRAWINGS ARE OFFERED AS A GUIDE ONLY AND ARE NOT GUARANTEED AS CORRECT.
 - WHERE REQUIRED ANY BUILDINGS, TROUGHS, FENCES AND OTHER STRUCTURES ON SITE ARE TO BE REMOVED AS DIRECTED BY THE ENGINEER. THE COST OF REMOVAL IS TO BE INCLUDED IN THE OVERALL EARTHWORKS FIGURE UNLESS A SPECIFIC ITEM FOR REMOVAL IS DENOTED IN THE SCHEDULE.
 - ALL EXCAVATED ROCK AND SURPLUS SPOIL TO BE REMOVED AND DISPOSED OFF SITE UNLESS NOTED OTHERWISE.
 - ALL FILLING ON LOTS AND WITHIN ROAD RESERVES GREATER THAN 200mm IS TO BE UNDERTAKEN USING LEVEL 1 SUPERVISION AND BE COMPLETED IN ACCORDANCE WITH AS 3798-2007. FILL AREAS ARE TO BE STRIPPED OF TOPSOIL, FILLED AND REPLACED WITH TOPSOIL (WHERE REQUIRED) TO OBTAIN THE FINAL LEVELS SHOWN ON THE DRAWINGS.
 - FILLING MATERIAL IS TO BE IN ACCORDANCE WITH THE SPECIFICATION, AS 3798-2007 & TO THE SATISFACTION OF COUNCIL AND THE SUPERINTENDENT.
 - ALL BATTERS SHALL BE 1 IN 6, UNLESS OTHERWISE SHOWN.
 - NO FILL OR STOCKPILING OF MATERIAL IS TO BE PLACED ON ANY RESERVE FOR PUBLIC OPEN SPACE UNLESS OTHERWISE DIRECTED OR APPROVED BY THE SUPERINTENDENT.
 - T.B.M.'S TO BE RE-ESTABLISHED BY THE LICENSED SURVEYOR IF FOUND TO BE MISSING AT THE COMMENCEMENT OF CONSTRUCTION. THE CONTRACTOR WILL BE RESPONSIBLE FOR CARE AND MAINTENANCE OF T.B.M.'S THEREAFTER.
 - AT LEAST 3 DAYS PRIOR TO COMMENCING WORK ON EXCAVATIONS IN EXCESS OF 150mm DEEP, A NOTIFICATION FORM MUST BE SENT TO WORKSAFE. THE CONTRACTOR IS TO COMPLY WITH WORKSAFE, THE MINES (TRENCHES) REGULATION 1982, THE MINES ACT 1958 AND OCCUPATIONAL HEALTH AND SAFETY ACT 1985, 2004.
- ALL SERVICE TRENCHES UNDER DRIVEWAYS, FOOTPATHS AND PARKING BAYS TO BE BACKFILLED WITH CLASS 2 CRUSHED ROCK. SERVICE TRENCHES LESS THAN 750mm BEHIND KERB AND PAVED TRAFFIC AREAS ARE ALSO TO BE BACKFILLED WITH COMPACTED CLASS 2 CRUSHED ROCK.
- WHERE REQUIRED, ALL EXISTING DAMS, DEPRESSIONS AND DRAINS ARE TO BE BREACHED, DRAINED, DESLUDGED AND SHALL BE EXCAVATED TO A CLEAN FIRM BASE. THE SURFACE SHALL BE INSPECTED, APPROVED AND LEVELED BY THE ENGINEER PRIOR TO COMMENCEMENT OF FILLING. THE FILL SHALL BE APPROVED SELECTED ON SITE MATERIAL OR APPROVED IMPORTED MATERIAL. THE FILL SHALL BE PLACED UNDER CONTROLLED MOISTURE CONDITIONS IN ACCORDANCE WITH THE SPECIFICATION
- NO BLASTING TO BE CARRIED OUT WITHIN THE MUNICIPALITY WITHOUT OBTAINING COUNCIL'S PERMISSION.

SERVICES

- GAS AND WATER CONDUITS ARE TO BE:
Ø50mm . CLASS 12 P.V.C. - SINGLE SERVICE
Ø100mm . CLASS 12 P.V.C. - DUAL SERVICE (DRINKING AND NON DRINKING WATER)

WITH THE FOLLOWING MINIMUM COVER TO FINISHED SURFACE LEVELS:
ROAD PAVEMENT - 0.80m
VERGE, FOOTPATHS - 0.45m

- ALL SERVICE CONDUIT TRENCHES UNDER ROAD PAVEMENTS TO BE BACKFILLED IN ACCORDANCE WITH RELEVANT MUNICIPALITY OR ROAD AUTHORITY SPECIFICATION.

STORM WATER DRAINAGE

- AG/SUBSOIL DRAIN TO BE LAID BEHIND KERB WHERE REQUIRED IN ACCORDANCE WITH THE COUNCIL STANDARD DRAWINGS AND CONNECTED TO UNDERGROUND DRAINAGE.
- ALL STORMWATER DRAINS ARE TO BE CLASS '2' R.C. PIPES UNLESS OTHERWISE SHOWN. ALL R.C. JOINTS ARE TO BE RUBBER RING JOINTED (R.R.J.).
- CENTRELINES OF ALL EASEMENT DRAINS ARE OFFSET 1.0m OR 2.2m (WHERE OUTSIDE OF SEWER) FROM THE PROPERTY LINE UNLESS SHOWN OTHERWISE.
- WHERE CURVED PIPES ARE SHOWN ON THE FACE PLANS THEY ARE TO BE LAID PARALLEL TO THE BACK OF KERB, EXCEPT WHERE A RADIUS HAS BEEN SPECIFICALLY NOMINATED. CURVED PIPES ARE TO BE APPROVED BY COUNCIL AND IN ACCORDANCE WITH THE MANUFACTURERS SPECIFICATIONS.

- WATER TAPPINGS TO BE LOCATED IN CENTRE OF ALLOTMENTS UNLESS OTHERWISE SHOWN.

- TELSTRA ARE TO BE NOTIFIED 7 DAYS PRIOR TO PLACEMENT OF CONCRETE WORKS.

PAVEMENT

- PAVEMENT DEPTHS MAY BE MODIFIED AS DIRECTED BY THE SUPERINTENDENT. PAVEMENT TO BE BOXED OUT TO MINIMUM DEPTH DENOTED, INSPECTED AND IF SUBGRADE IS IN QUESTION, FURTHER TESTING CARRIED OUT TO DETERMINE FINAL PAVEMENT DEPTH.
- WHERE PAVEMENT IS CONSTRUCTED ON FILLING, FILL MATERIAL IS TO BE APPROVED BY THE SUPERINTENDENT AND COUNCIL. FILLING TO BE CONSTRUCTED IN LAYERS 150mm THICK WITH COMPACTION ACHIEVING 95% AUSTRALIAN STANDARD DENSITY.
- WHEN PAVEMENT EXCAVATION IS IN ROCK ALL LOOSE MATERIAL (INCLUDING ROCKS AND CLAY) MUST BE REMOVED. THE SUB-GRADE MUST THEN BE REGULATED WITH COUNCIL APPROVED MATERIAL.

SIGNAGE AND LINEMARKING

- LINEMARKING AND SIGNAGE TO BE INSTALLED IN ACCORDANCE WITH AS 1742 SERIES UNLESS NOTED OTHERWISE. STREET SIGNS ARE TO BE INSTALLED IN ACCORDANCE WITH COUNCIL STANDARDS.
- ALL TEMPORARY WARNING SIGNS USED DURING CONSTRUCTION SHALL BE SUPPLIED AND MAINTAINED IN ACCORDANCE WITH AS 1742-3.
- TACTILE GROUND SURFACE INDICATORS ARE TO BE INSTALLED IN ACCORDANCE WITH THE DISABILITY DISCRIMINATION ACT AND RELEVANT COUNCIL STANDARD DRAWINGS.

ENVIRONMENTAL

- CONTRACTOR TO PROVIDE AN ENVIRONMENTAL MANAGEMENT PLAN INCLUDING SILT AND SEDIMENT RUNOFF PROTECTION ETC. PRIOR TO THE COMMENCEMENT OF WORKS.
- ALL TREES AND SHRUBS ARE TO BE RETAINED UNLESS OTHERWISE SHOWN. IF ROAD AND DRAINAGE CONSTRUCTION NECESSITATES THEIR REMOVAL, WRITTEN PERMISSION MUST BE OBTAINED FROM THE SUPERINTENDENT.
- TREES NOT SPECIFIED FOR REMOVAL ARE TO BE PROTECTED WITH APPROPRIATE EXCLUSION FENCING PRIOR TO COMMENCEMENT OF ANY WORKS.
- THE CONTRACTOR IS REQUIRED TO OBTAIN A 'PERMIT TO WORK' FROM MELBOURNE WATER'S SURVEILLANCE OFFICER AT THE PRE-COMMENCEMENT MEETING. THE CONTRACTOR IS REQUIRED TO ENSURE THAT THE 'PERMIT TO WORK' IS KEPT UP TO DATE FOR THE DURATION OF THE CONTRACT.

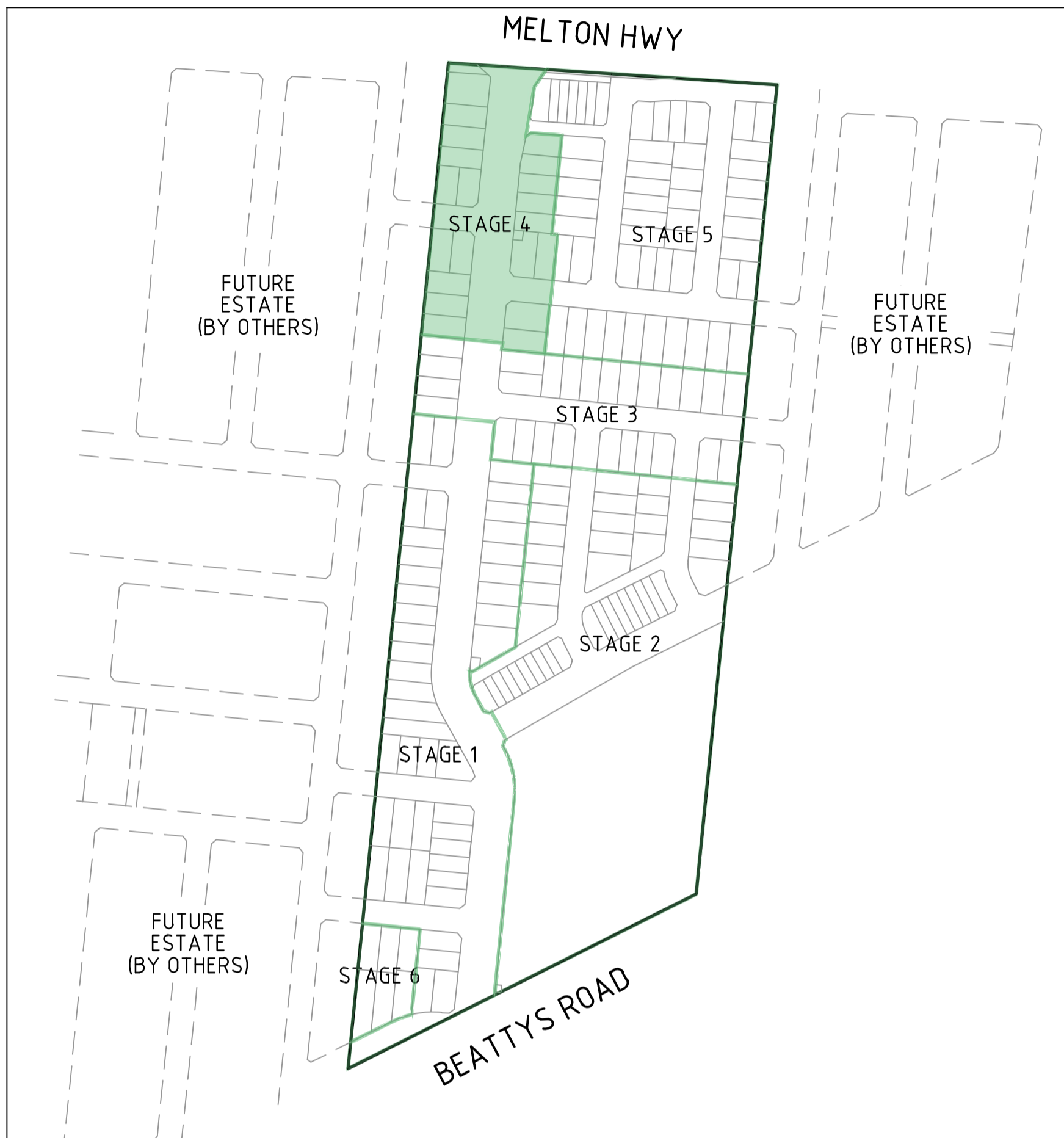
DRAWING SCHEDULE

REFERENCE	DESCRIPTION	REVISION	SHEET No.
CR100	FACE SHEET	2	1
CR200	FACE PLAN & PASSIVE IRRIGATION PLAN	1	2
CR300	ROAD LONG SECTIONS	1	3
CR400	ROAD CROSS SECTIONS - CROWN DRIVE	1	4
CR401	ROAD CROSS SECTIONS - STORY STREET & ENGLISH ROAD	1	5
CR500	INTERSECTION DETAILS	2	6
CR600	DRAINAGE LONG SECTIONS & PIT SCHEDULE	1	7
CR700	PAVEMENT AND TYPICAL DETAILS	1	8
CR701	PASSIVE IRRIGATION TYPICAL DETAIL	1	9
CR702	PASSIVE IRRIGATION TYPICAL DETAIL	1	10
CR800	SIGNAGE AND LINEMARKING	1	11

SERVICE LOCATION TABLE

ROAD NAME	POTABLE WATER		GAS		NBN (TELECOM)		ELECTRICITY			
	SIDE	OFFSET	SIDE	OFFSET	SIDE	OFFSET	POLE		U/G CABLE	
CROWN DRIVE	W	2.45	W	2.00	E	1.85	E	0.90x	E	2.80
ENGLISH ROAD	N	2.45	N	2.00	S	1.85	S	0.90x	S	2.55
STORY STREET	S	2.45	S	2.00	N	1.85	N	0.90x	N	2.55
MELTON HIGHWAY (NEW SERVICE ONLY)	S	6.80	S	6.30	-	-	-	-	-	-

- TELECOMMUNICATIONS AND ELECTRICITY CABLES TO BE CONSTRUCTED IN A COMMON TRENCH IN ACCORDANCE WITH ELECTRICITY AUTHORITY STANDARD DRG'S.
- GAS AND WATER MAINS TO BE CONSTRUCTED IN A COMMON TRENCH.
- x = OFFSET FROM BACK OF KERB



LOCALITY PLAN

SCALE: NOT TO SCALE
MELWAY / VICROADS: 354B11



**DIAL BEFORE
YOU DIG**
www.1100.com.au

WARNING

BEWARE OF UNDERGROUND/OVERHEAD SERVICES

THE LOCATION OF SERVICES ARE APPROXIMATE ONLY AND THEIR EXACT POSITION SHOULD BE PROVEN ON SITE. NO GUARANTEE IS GIVEN THAT ALL EXISTING SERVICES ARE SHOWN. SPECIAL CONSIDERATION SHOULD BE GIVEN TO CONSTRUCTION PROCEDURES UNDER OVERHEAD ELECTRICITY TRANSMISSION LINES.

LEGEND

DESCRIPTION

DESCRIPTION	EXISTING	PROPOSED
WATER MAIN, VALVE AND HYDRANT	DW	DW
WATER RECYCLED	NDW	NDW
UNDERGROUND ELECTRICITY	E	E
OVERHEAD ELECTRICITY & POLE	OE	OE
TELECOMMUNICATIONS & SERVICE PIT	T	T
OPTIC FIBRE	OF	OF
OVERHEAD TELECOMMUNICATIONS	OT	OT
GAS MAIN	G	G
BRANCH SEWER & MAINTENANCE STRUCTURE	S	S
SEWER & MAINTENANCE STRUCTURE	S	S
SEWER RISING MAIN	SRM	SRM
CENTRAL INVERT	>	>
COUNCIL STORMWATER DRAIN AND PIT		
STORM WATER DRAINAGE PROPERTY INLETS		
COUNCIL STORM WATER PITS		
HOUSE DRAIN	H	H
AG DRAIN AND FLUSHER	AG	AG
MWC STORM WATER DRAIN & PIT		
MWC STORM WATER PITS		
STORM WATER DRAINAGE PIT NUMBER	Ex. 47	1
GAS & WATER CONDUITS	GW	GW
CONCRETE VEHICLE CROSSING		
INDUSTRIAL VEHICLE CROSSING		
RIDGE / CHANGE OF GRADE LINE		
SURFACE CONTOUR MINOR	-169.00	169.00
SURFACE CONTOUR MAJOR	-168.90	168.90
SURFACE LEVEL	E123.45	F124.68
BATTER LEVEL (TOP / TOE)	T124.80	T124.80
EARTHWORKS GRADE		1 in 150
SIGN AND POST		
LIGHT & POLE (BY OTHERS)		
STREET SIGN		
PERMANENT SURVEY MARK		
TEMPORARY BENCH MARK		
BOLLARD		
ROAD CHAINAGES	CH116.57 (L/R)TP CH116.57	CH116.57 (L/R)TP CH116.57
LOT CHAINAGES	CH20.06	CH20.06
PASSIVE IRRIGATION INLET CHAINAGE		TR CH25.00
SETOUT POINT		A2
LIMIT OF WORKS		
BATTER		
EXCAVATION GREATER THAN 0.20m		
FILLING GREATER THAN 0.20m		
ROCK BEACHING		
RETAINING WALL		
BOUNDARY BATTER SLOPE		
FENCE - TREE PROTECTION		
FENCE - VEHICLE EXCLUSION		
FENCES		
GUARD RAIL		
TREE (& SURVEYED CANOPY) TO BE RETAINED		
TREE TO BE PROTECTED		
TREE TO BE REMOVED		
PASSIVE IRRIGATION TREE PIT TYPE 1 (15m PIT & 2.0m TRENCH)		
PASSIVE IRRIGATION TREE PIT TYPE 2 (15m PIT & 15m TRENCH)		
PASSIVE IRRIGATION TREE PIT TYPE 3 (10m PIT & 15m TRENCH)		
VEGETATION LINE		
FOOTPATH		
TACTILE GROUND SURFACE INDICATOR		
KERB TRANSITION		B2 SM2

file name: 305873CR100.dwg, layout: name: CD100, plotted by: Jerry, Sheet 1 of 12 Sheets, file location: G:\305873\CD100\ACAD\plot date: 08/11/2021, Lx27, Pn Sheet

Rev	Amendments	Approved	Date
2	AS CONSTRUCTED	R.W.	08/11/21
1	AMENDMENTS TO SHEET CR500	R.W.	08/06/21
0	ISSUED FOR CONSTRUCTION	M.T-S	12/03/21
B	UPDATE TO SHEETS CR200/500/600/700/800	M.T-S	03/02/21
A	PRELIMINARY ISSUE	M.T-S	30/12/2020

Scale	



© Spiire Australia Pty Ltd All Rights Reserved
This document is produced by Spiire Australia Pty Ltd solely for the benefit of and use by the client in accordance with the terms of the retainer. Spiire Australia Pty Ltd does not and shall not assume any responsibility or liability whatsoever to any third party arising out of any use or reliance by third party on the content of this document.



414 LA TROBE STREET PO BOX 16084 MELBOURNE
VICTORIA 3007 AUSTRALIA T 61 3 9993 7888
spiire.com.au ABN 55 050 029 635



Designed
J.SHENG
Authorised
M.TOOMER-SMITH

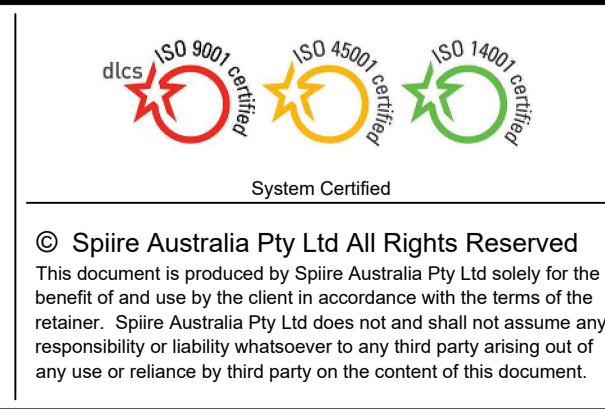
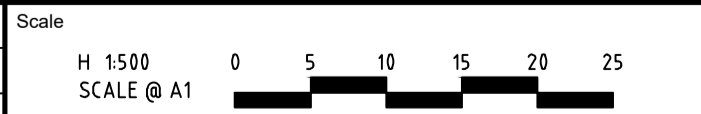
Checked
P.COUNSEL
Date
12-03-2021

**KERANI HEIGHTS
STAGE 4
ROAD AND DRAINAGE
FACE SHEET**
CITY OF MELTON
PGG (PLUMPTON 2) PTY LTD

AS CONSTRUCTED Drg No **305873CR100** Rev **2**

file name: 305873CR200.dwg, layout name: CR200, plotted by: Jerr, Sherr, file location: G:\305873\305873.dwg, ACAD plot date: 08/11/2021, 12:28 PM, Sheet 2 of 12, Sheets

Rev	Amendments	Approved	Date
1	AS CONSTRUCTED	R.W.	08/11/21
0	ISSUED FOR CONSTRUCTION	M.T-S	12/03/21
B	ADDED DRAINAGE 116 TO 113	M.T-S	03/02/21
A	PRELIMINARY ISSUE	M.T-S	30/12/2020



spiire

414 LA TROBE STREET PO BOX 16084 MELBOURNE
VICTORIA 8007 AUSTRALIA T 61 3 9993 7888
spiire.com.au ABN 55 050 029 635

**POTTER
GEORGE**

Designed
J.SHENG

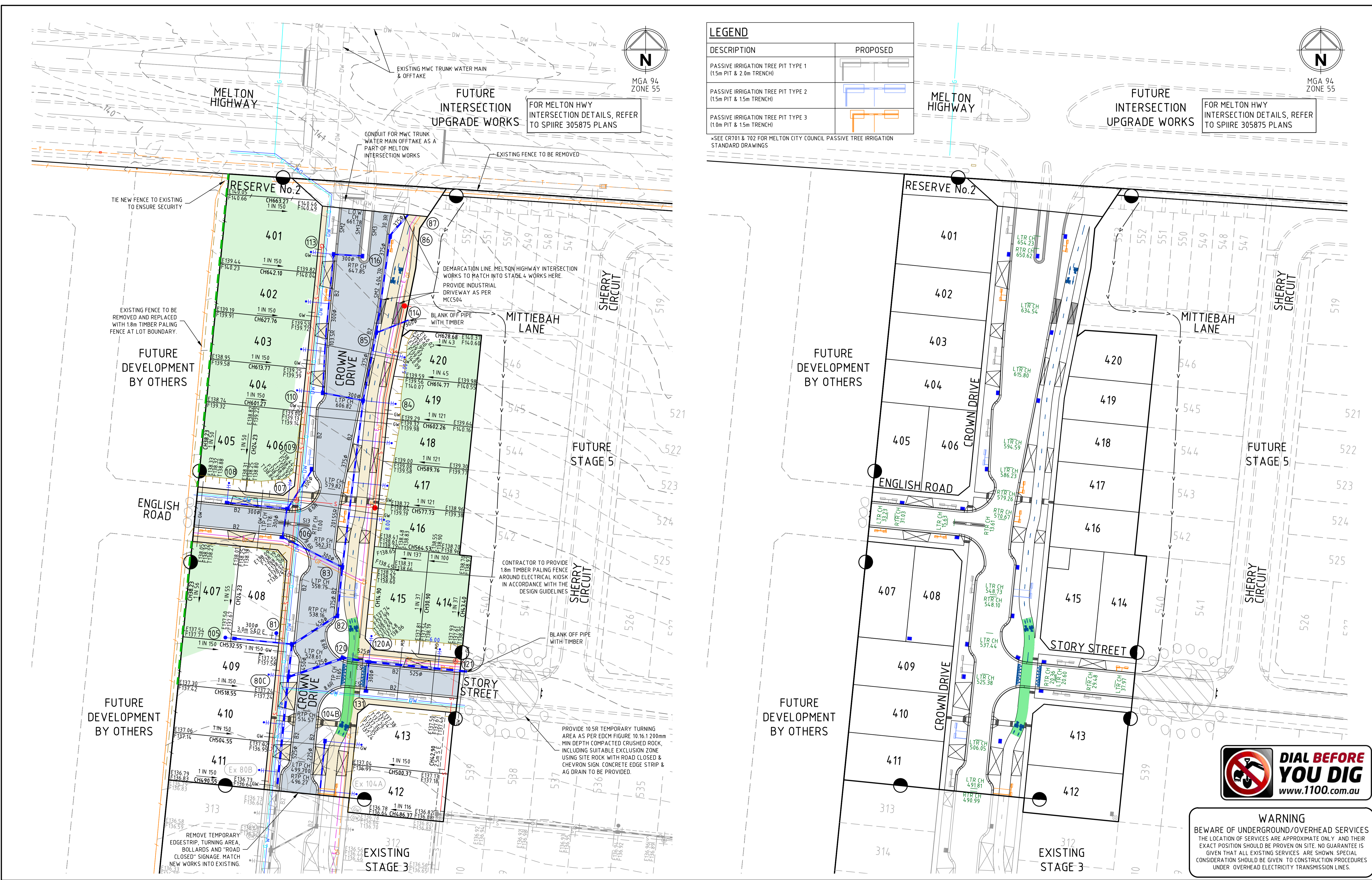
Authorised
M.TOOMER-SMITH

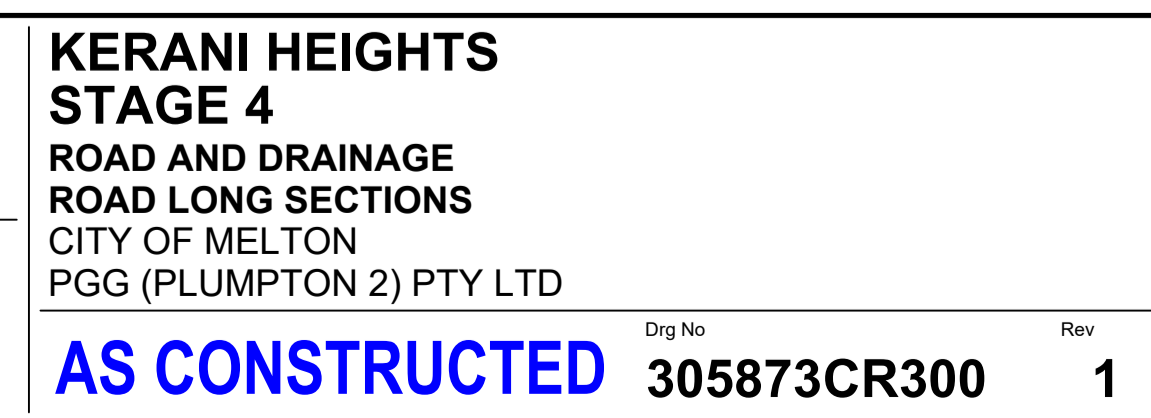
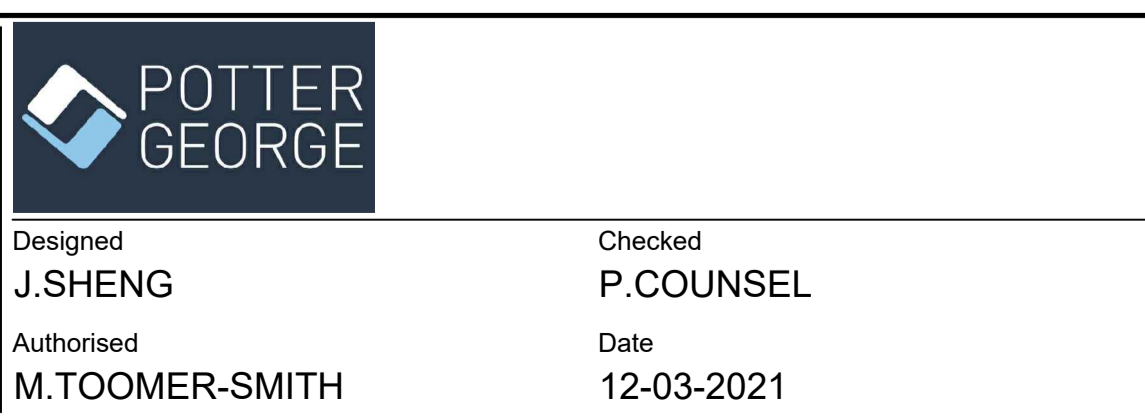
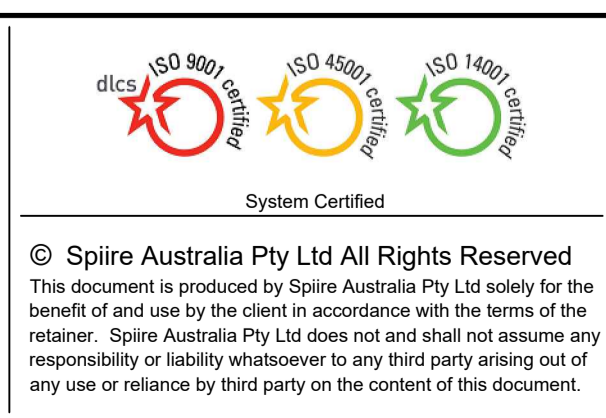
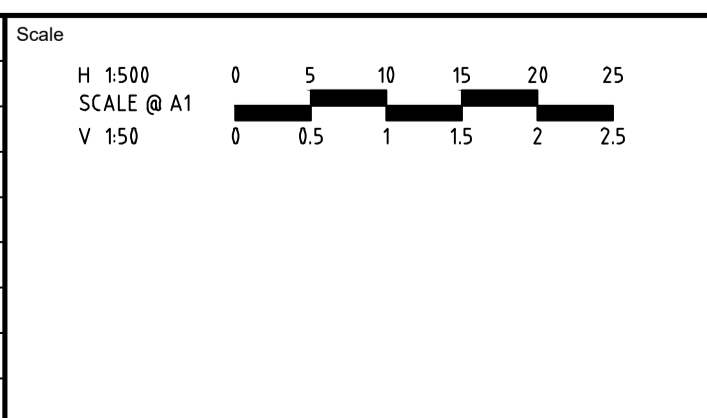
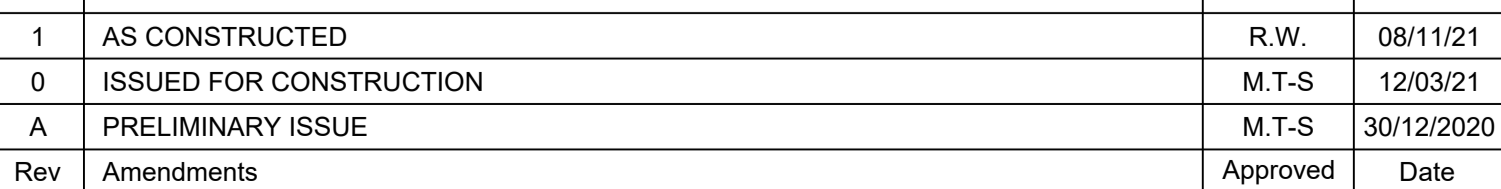
Checked
P.COUNSEL

Date
12-03-2021

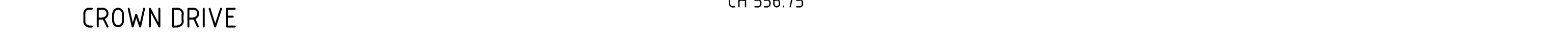
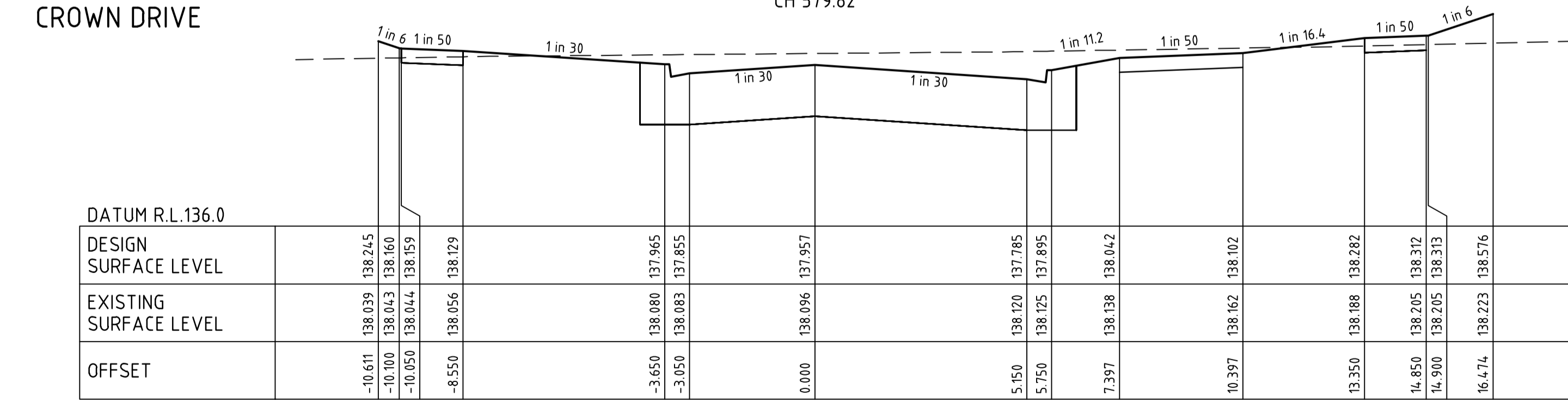
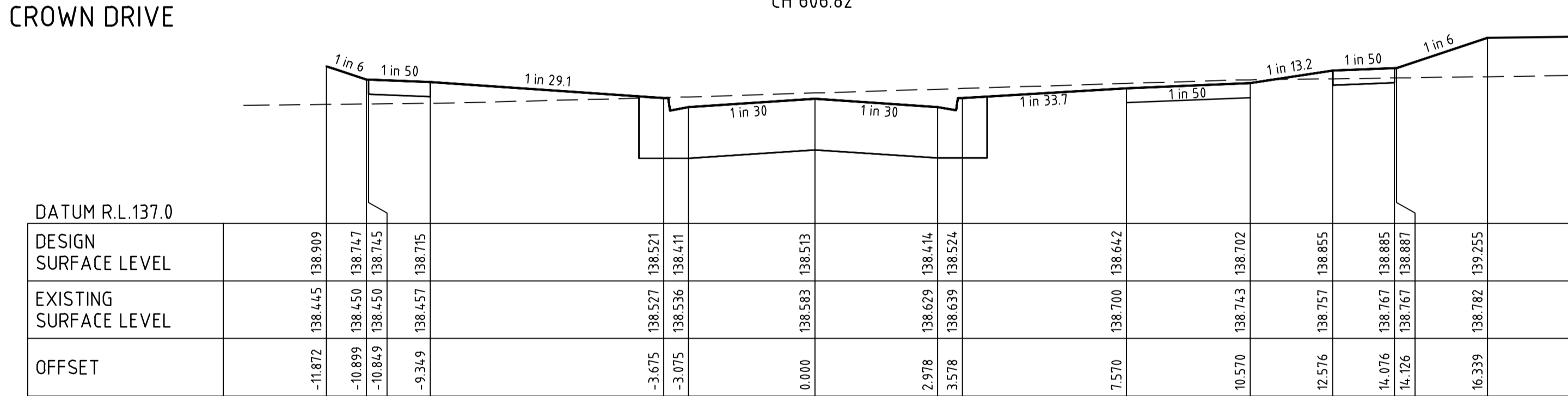
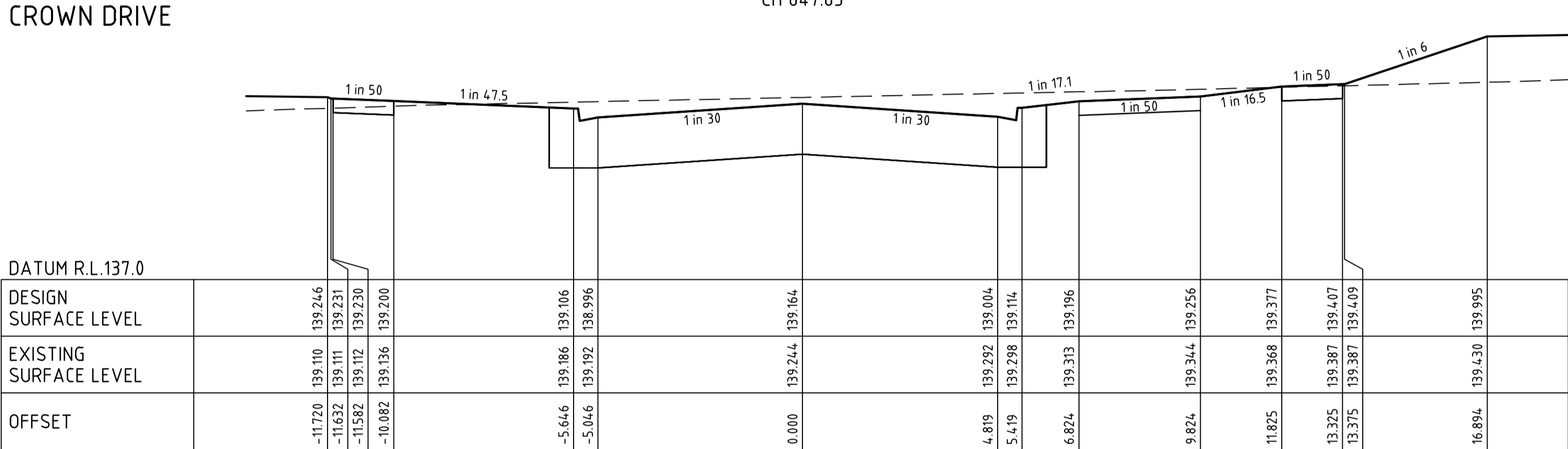
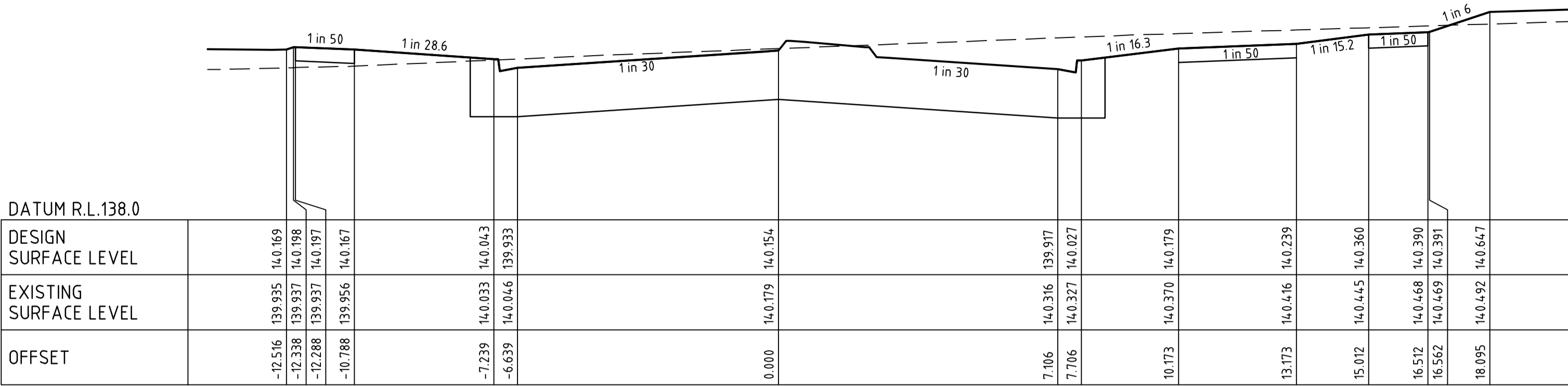
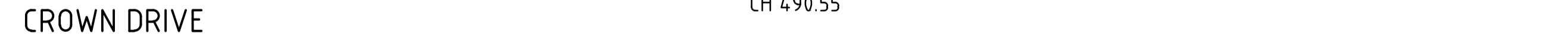
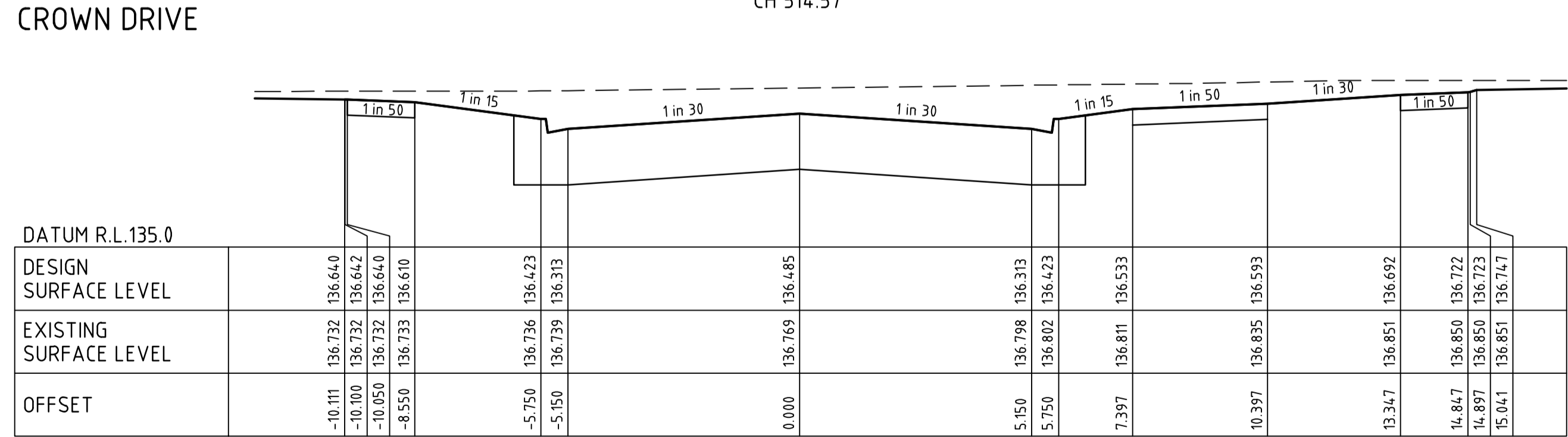
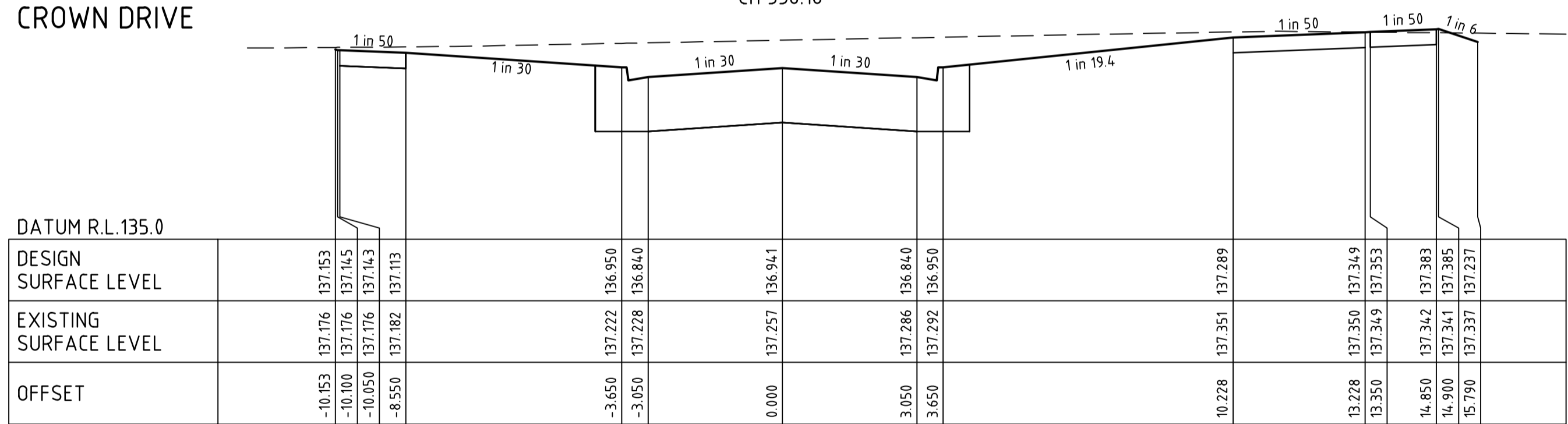
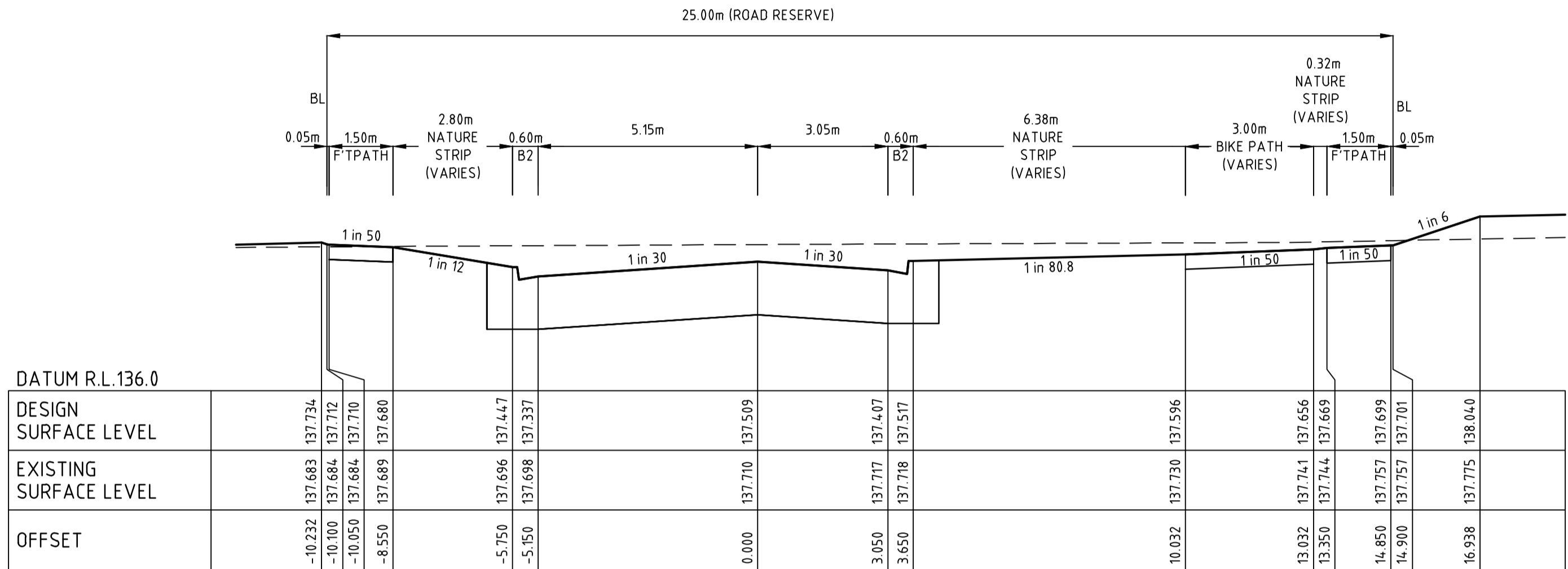
**KERANI HEIGHTS
STAGE 4
ROAD AND DRAINAGE
FACE PLAN & PASSIVE IRRIGATION PLAN**
CITY OF MELTON
PGG (PLUMPTON 2) PTY LTD

AS CONSTRUCTED Drg No **305873CR200** Rev **1**





FILLING NOTE
ALL FILLING WITHIN ROAD RESERVES IS TO BE UNDERTAKEN USING LEVEL 1 SUPERVISION AND BE COMPLETED IN ACCORDANCE WITH AS 3798-2007 AND TO THE SATISFACTION OF COUNCIL AND THE SUPERINTENDENT. FILL AREAS ARE TO BE STRIPPED OF TOPSOIL, FILLED AND REPLACED WITH TOPSOIL (WHERE REQUIRED) TO OBTAIN THE FINAL LEVELS SHOWN ON THE DRAWINGS.



file name: 305873CR400.dwg layout name: CR400 plotted by: Jerry Sheng
file location: G:\305873\305873\civil\ACAD\plot date: 08/11/2021 1:28 PM sheet 4 of 12 sheets

1	AS CONSTRUCTED	R.W.	08/11/21		
0	ISSUED FOR CONSTRUCTION	M.T-S	12/03/21		
A	PRELIMINARY ISSUE	M.T-S	30/12/2020		
Rev	Amendments	Approved	Date		

Scale
H 1:100
SCALE @ A1
V 1:50

System Certified

© Spiire Australia Pty Ltd All Rights Reserved
This document is produced by Spiire Australia Pty Ltd solely for the benefit of and use by the client in accordance with the terms of the retainer. Spiire Australia Pty Ltd does not and shall not assume any responsibility or liability whatsoever to any third party arising out of any use or reliance by third party on the content of this document.

414 LA TROBE STREET PO BOX 16084 MELBOURNE
VICTORIA 8007 AUSTRALIA T 61 3 9993 7888
spiire.com.au ABN 55 050 029 635

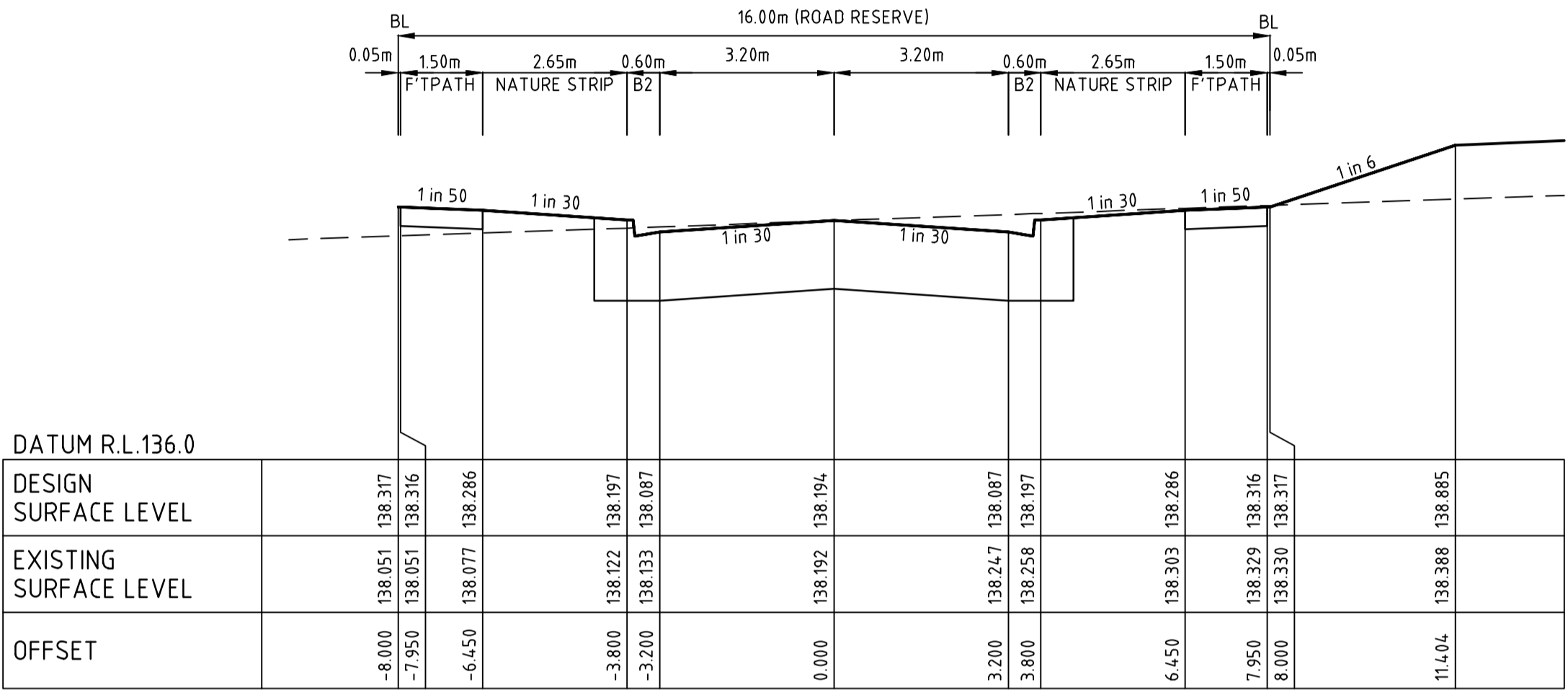
Designed
J.SHENG
Authorised
M.TOOMER-SMITH
Checked
P.COUNSEL
Date
12-03-2021

KERANI HEIGHTS
STAGE 4
ROAD AND DRAINAGE
ROAD CROSS SECTIONS - CROWN DRIVE
CITY OF MELTON
PGG (PLUMPTON 2) PTY LTD

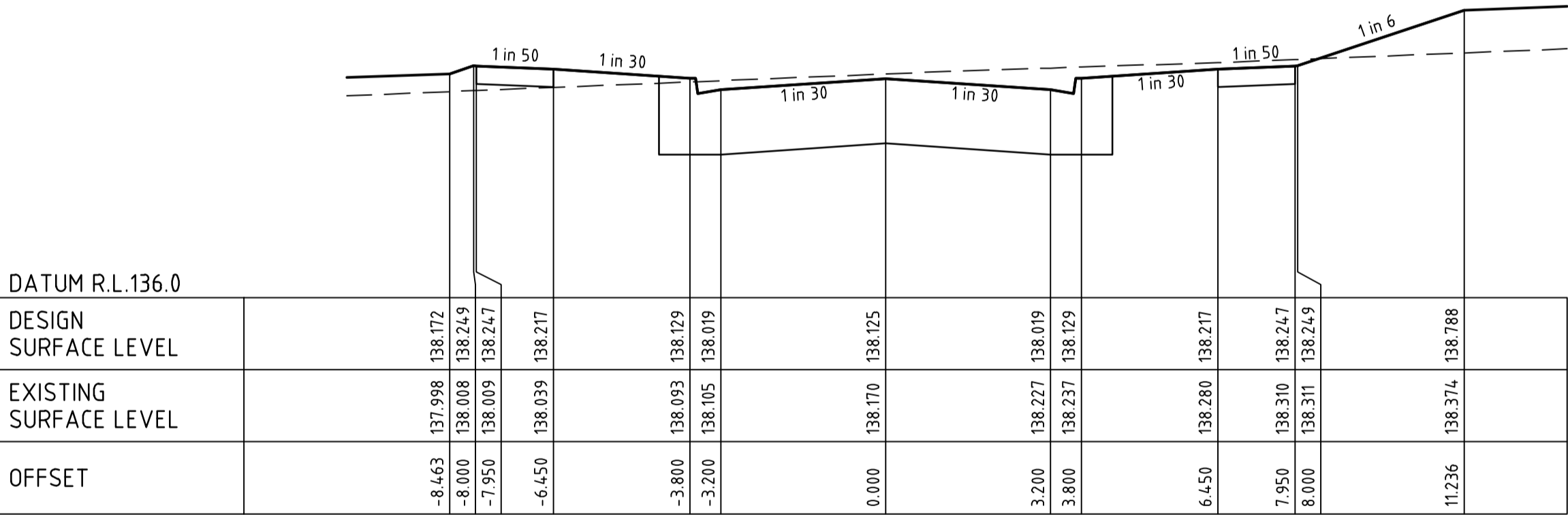
AS CONSTRUCTED

Drg No
305873CR400
Rev
1

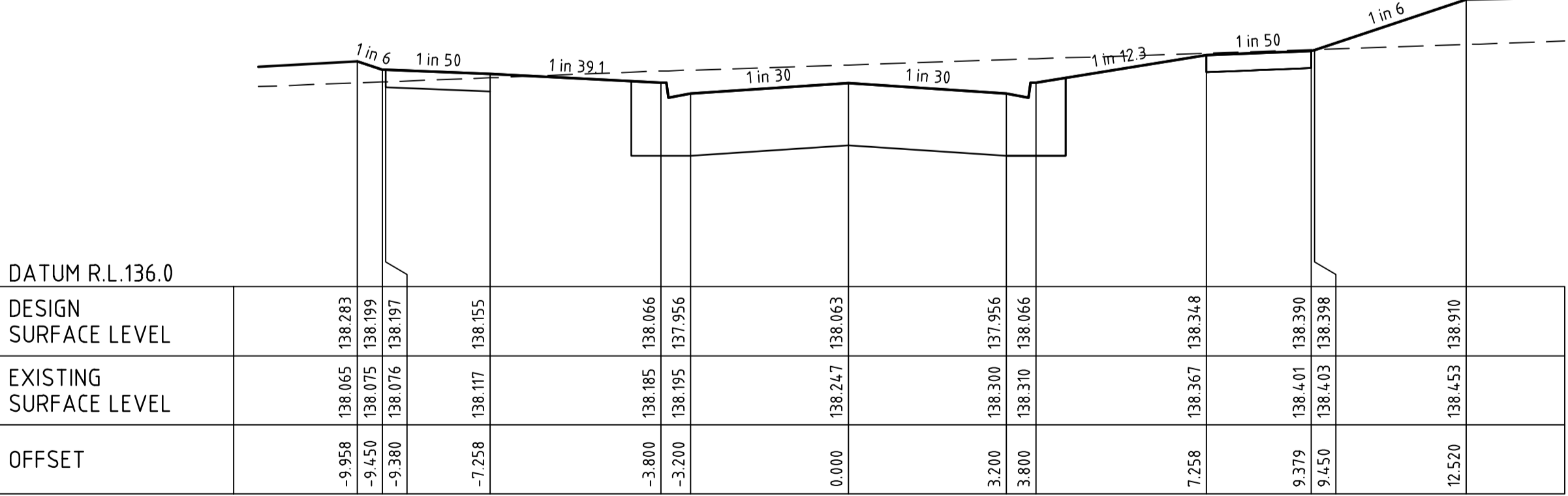
FILLING NOTE
ALL FILLING WITHIN ROAD RESERVES IS TO BE UNDERTAKEN USING LEVEL 1 SUPERVISION AND BE COMPLETED IN ACCORDANCE WITH AS 3798-2007 AND TO THE SATISFACTION OF COUNCIL AND THE SUPERINTENDENT. FILL AREAS ARE TO BE STRIPPED OF TOPSOIL, FILLED AND REPLACED WITH TOPSOIL (WHERE REQUIRED) TO OBTAIN THE FINAL LEVELS SHOWN ON THE DRAWINGS.



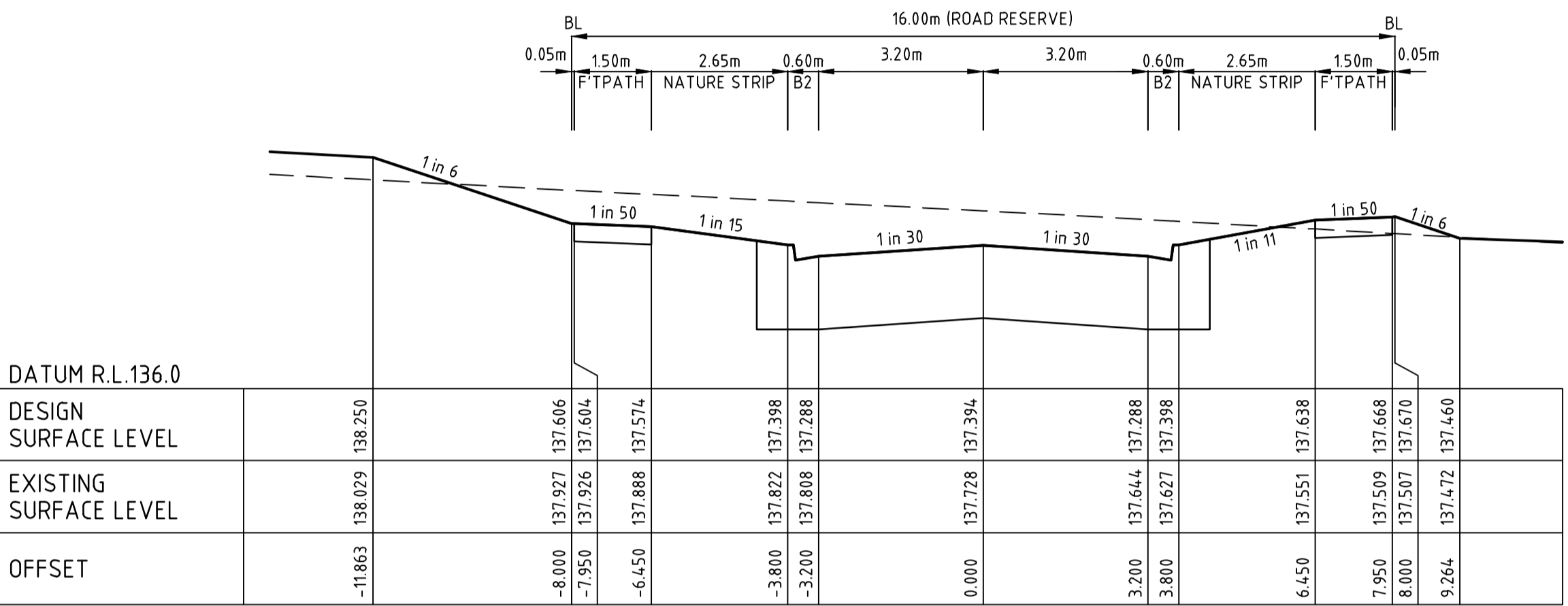
ENGLISH ROAD



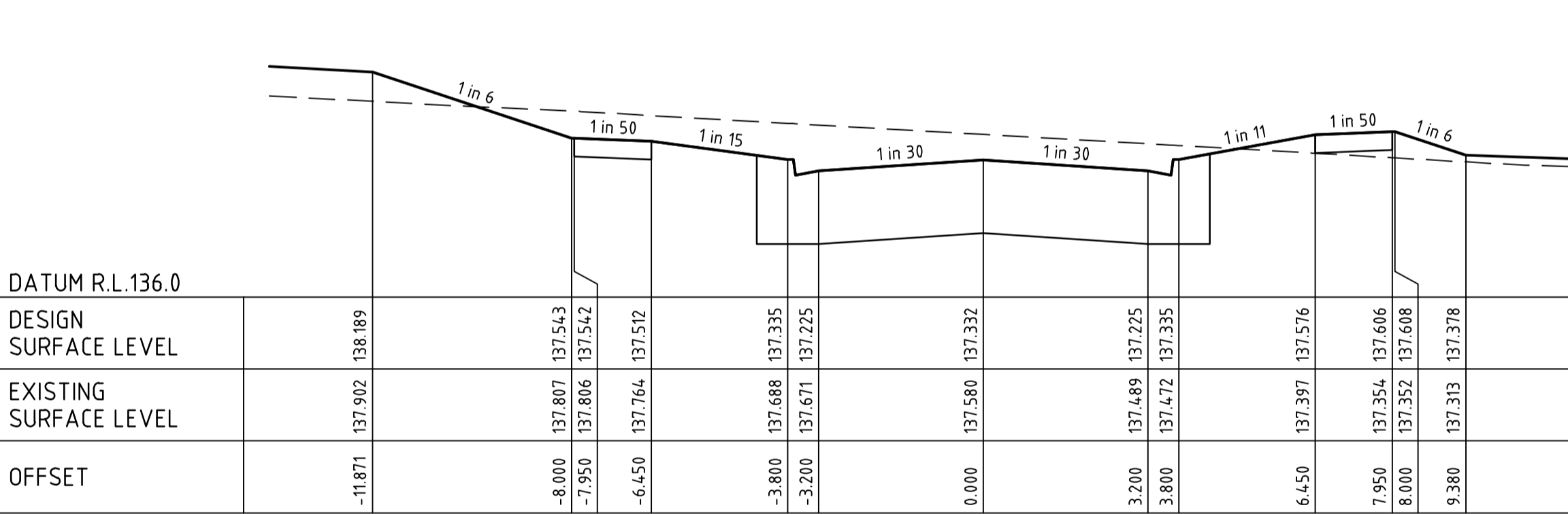
ENGLISH ROAD



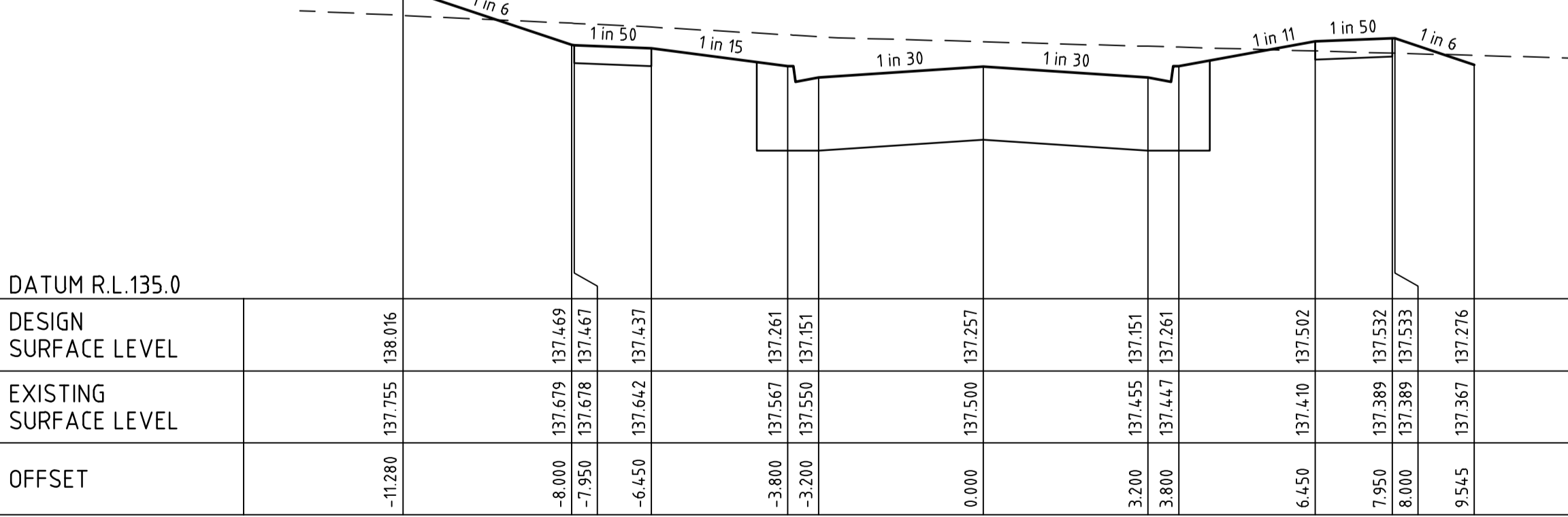
ENGLISH ROAD



STORY STREET



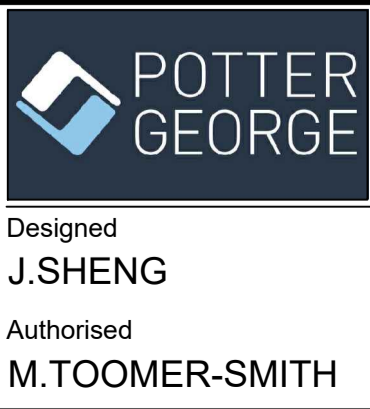
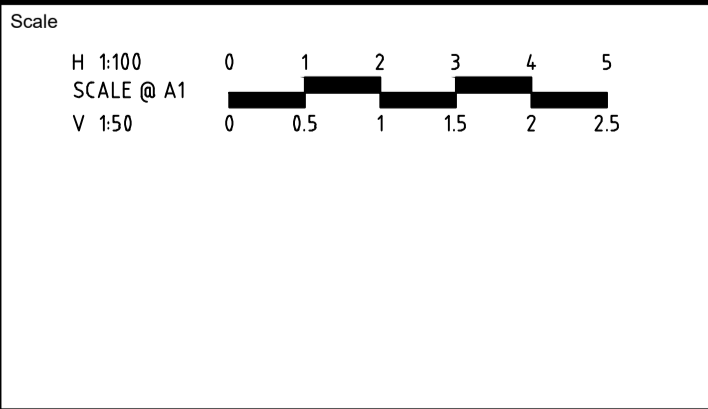
STORY STREET



STORY STREET

file name: 305873CR400.dwg layout name: CR401 file location: G:\305873\civil\ACAD\Plot date: 08/11/2021 4:28 PM Sheet 5 of 12 Sheets

1	AS CONSTRUCTED	R.W.	08/11/21	
0	ISSUED FOR CONSTRUCTION	M.T-S	12/03/21	
A	PRELIMINARY ISSUE	M.T-S	30/12/2020	
Rev	Amendments	Approved	Date	



Checked
P.COUNSEL

Date
12-03-2021

KERANI HEIGHTS
STAGE 4
ROAD AND DRAINAGE
ROAD CROSS SECTIONS - STORY STREET & ENGLISH ROAD
CITY OF MELTON
PGG (PLUMPTON 2) PTY LTD

AS CONSTRUCTED

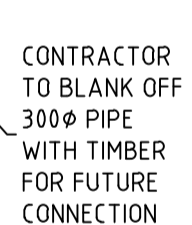
Drp No
305873CR401

Rev
1



**KERANI HEIGHTS
STAGE 4
ROAD AND DRAINAGE
DRAINAGE LONG SECTIONS & PIT SCHEDULE
CITY OF MELTON
PGG (PLUMPTON 2) PTY LTD**

PIT SETOUT CO-ORDINATES



CONTRACTOR
TO BLANK OFF
300Ø PIPE
WITH TIMBER
FOR FUTURE
CONNECTION

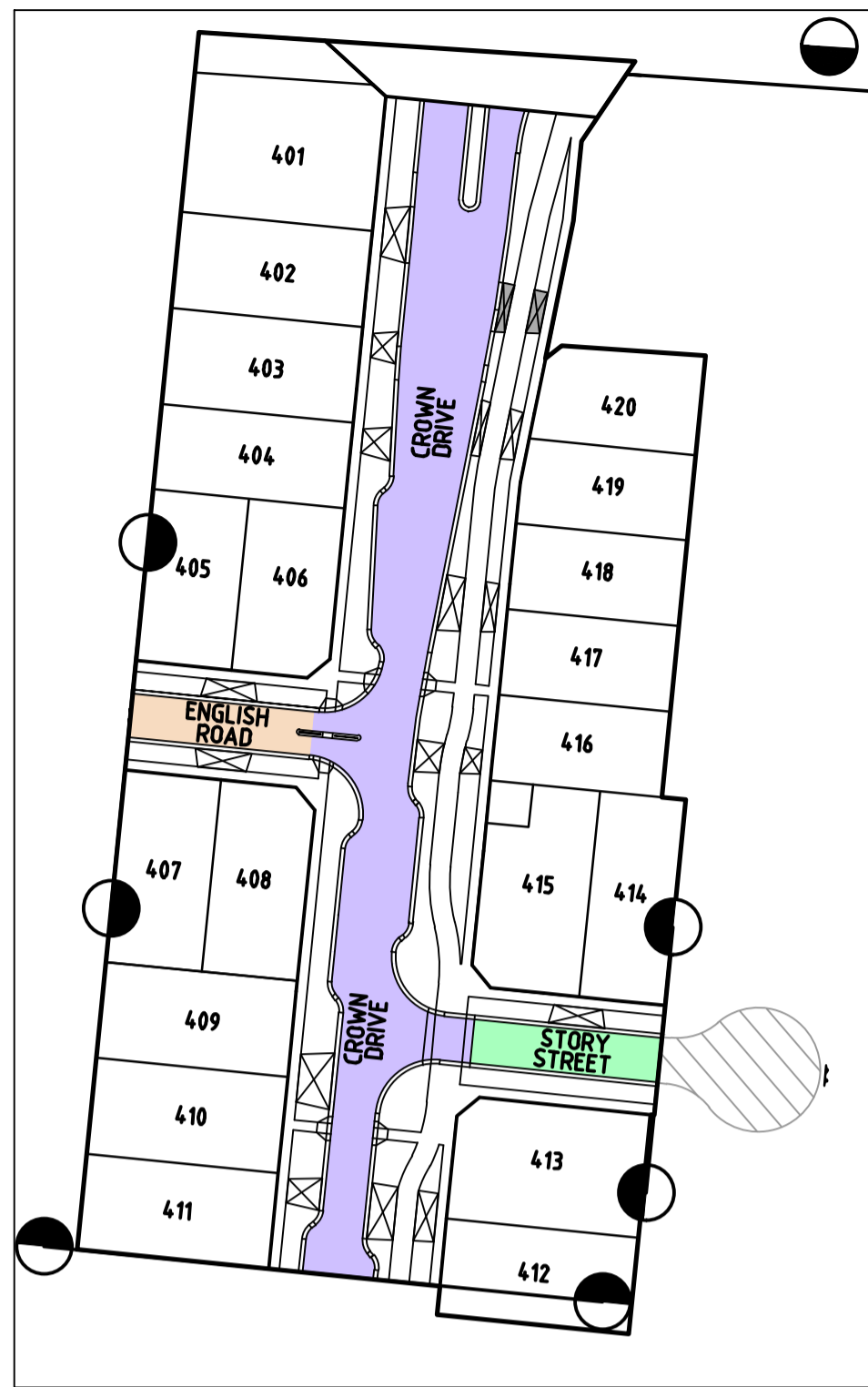
THE PAVEMENT DESIGNS SHOWN HERE HAVE BEEN DESIGNED/PROVIDED BY GROUND SCIENCE PTY LTD WHO ARE RESPONSIBLE FOR THE GEOTECHNICAL WORK ON THIS PROJECT. SPIIRE IS NOT RESPONSIBLE FOR THE WORK OF GROUND SCIENCE PTY LTD.

THE DESIGN HAS BEEN EXTRACTED FROM THE GROUND SCIENCE PTY LTD REPORT ON "GEOTECHNICAL INVESTIGATION, 937-961 MELTON HIGHWAY, FRASER RISE" PREPARED FOR PGG (PLUMPTON No 2) PTY LTD c/-URBAN BASE. THIS DOCUMENT SHOULD BE REVIEWED TO ENSURE THAT THE DESIGN HAS BEEN ACCURATELY REPRODUCED.

A COPY OF THE DOCUMENT WILL BE PROVIDED TO YOU ON REQUEST.

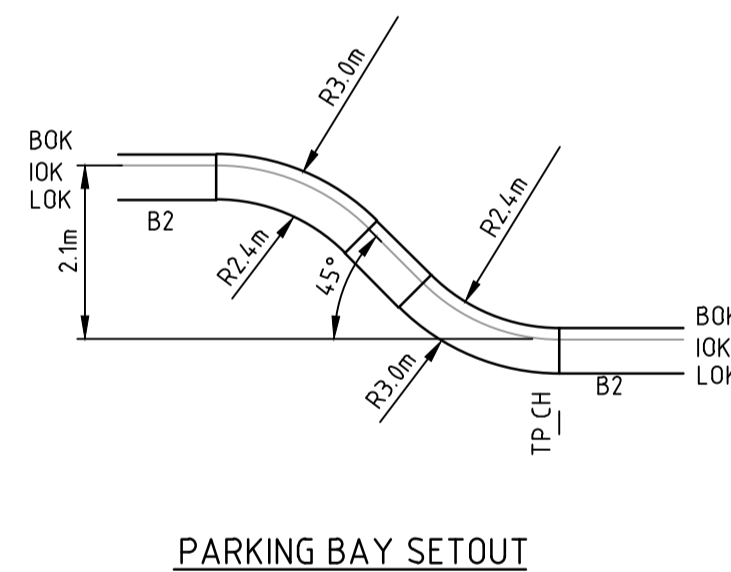
SPIIRE DOES NOT ACCEPT ANY RESPONSIBILITY FOR THE ACCURACY, ADEQUACY OR APPROPRIATENESS OF THE GEOTECHNICAL WORK AND PAVEMENT DESIGNS.

ANY QUERIES IN RESPECT TO THE GEOTECHNICAL WORK AND PAVEMENT DESIGNS SHOULD BE ADDRESSED TO GROUND SCIENCE PTY LTD AND SENT TO SPIIRE.

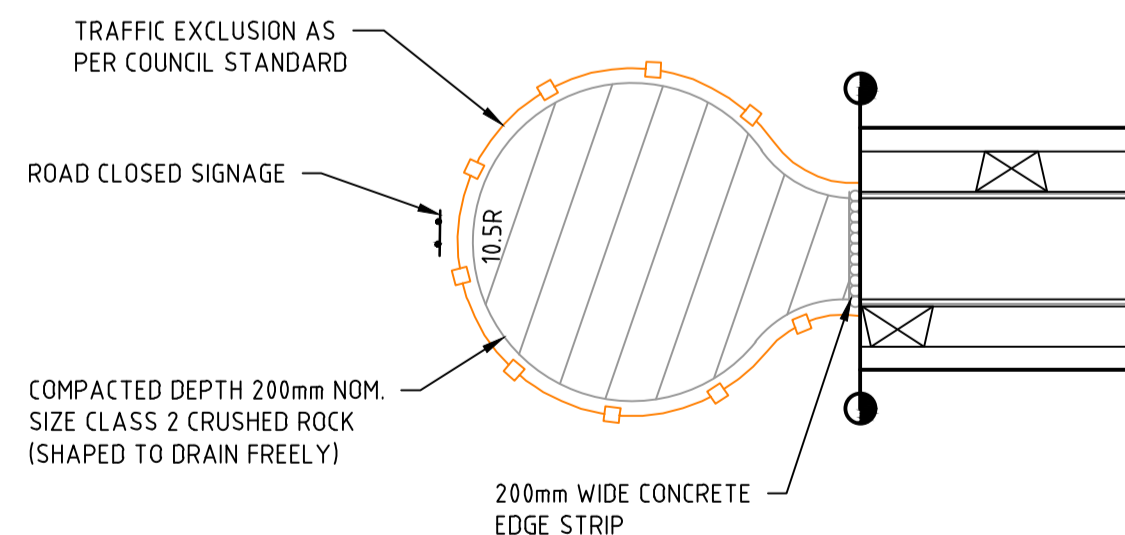


H 1:1000
SCALE @ A1

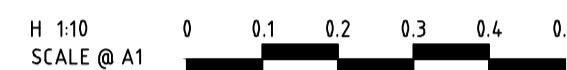
PAVEMENT LAYER	DESCRIPTION	DEPTH (mm)		
		ACCESS PLACE	ACCESS STREET LEVEL 1	CONNECTOR STREET
ASPHALT WEARING	SIZE 10 TYPE L ASPHALT	30	0	0
ASPHALT WEARING	SIZE 10 TYPE N ASPHALT	0	30	0
ASPHALT WEARING	SIZE 14 TYPE H ASPHALT	0	0	40
ASPHALT INTERMEDIATE	SIZE 20 TYPE SI	0	0	75
ASPHALT BASE	SIZE 10 TYPE N ASPHALT	30	30	0
ASPHALT BASE	SIZE 20 TYPE SI	0	0	75
PRIME	PRIME COAT AND 10mm SAMI SEAL	Y	Y	Y
BASE	20mm NOMINAL SIZE VICROADS CLASS 2 FCR, COMPACTED TO AT LEAST 99% MODIFIED DRY DENSITY RATIO WITHIN 3% OF THE MODIFIED OPTIMUM MOISTURE CONTENT	130	130	0
BASE	20mm VICROADS 3% CTCR CLASS 3 FCR. SUITABLE CURING TIME SHALL BE ALLOWED FOR CEMENT TREATED CRUSHED ROCK PRIOR TO SUBSEQUENT CONSTRUCTION	0	0	130
UPPER SUB-BASE	20mm NOMINAL SIZE CLASS 3 FCR, COMPACTED TO AT LEAST 98% MODIFIED DRY DENSITY RATIO WITHIN 3% OF THE MODIFIED OPTIMUM MOISTURE CONTENT.	100	120	0
LOWER SUB-BASE	20mm VICROADS 3% CTCR CLASS 3 FCR. SUITABLE CURING TIME SHALL BE ALLOWED FOR CEMENT TREATED CRUSHED ROCK PRIOR TO SUBSEQUENT CONSTRUCTION	0	0	0
LOWER SUB-BASE	20mm NOMINAL SIZE CLASS 4 FCR. COMPACTED TO AT LEAST 98% MODIFIED DRY DENSITY RATIO WITHIN 3% OF THE MODIFIED OPTIMUM MOISTURE CONTENT.	140	200	0
CAPPING	VICROADS TYPE A OR SIMILAR (AS PER TABLE 6 IN GROUND SCIENCE PTY LTD GEOTECHNICAL REPORT)	200	200	300
	TOTAL PAVEMENT DEPTH	630	710	620
CONSTRUCTION LAYER	VICROADS TYPE A OR SIMILAR (AS PER TABLE 6 IN GROUND SCIENCE PTY LTD GEOTECHNICAL REPORT)	150	150	150
	TOTAL PAVEMENT DEPTH WITH CONSTRUCTION LAYER	780	860	770
SUBGRADE	UNIT 3 OR CONTROLLED FILL (CBR>15). SEE GEOTECHNICAL REPORT FOR FURTHER DETAILS	Y	Y	Y



PARKING BAY SETOUT



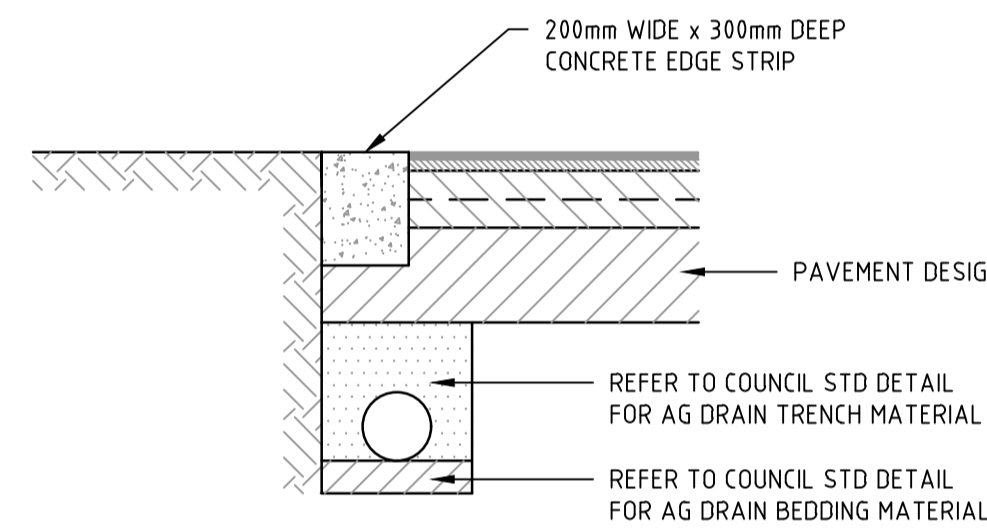
TEMPORARY TURNING AREA DETAIL



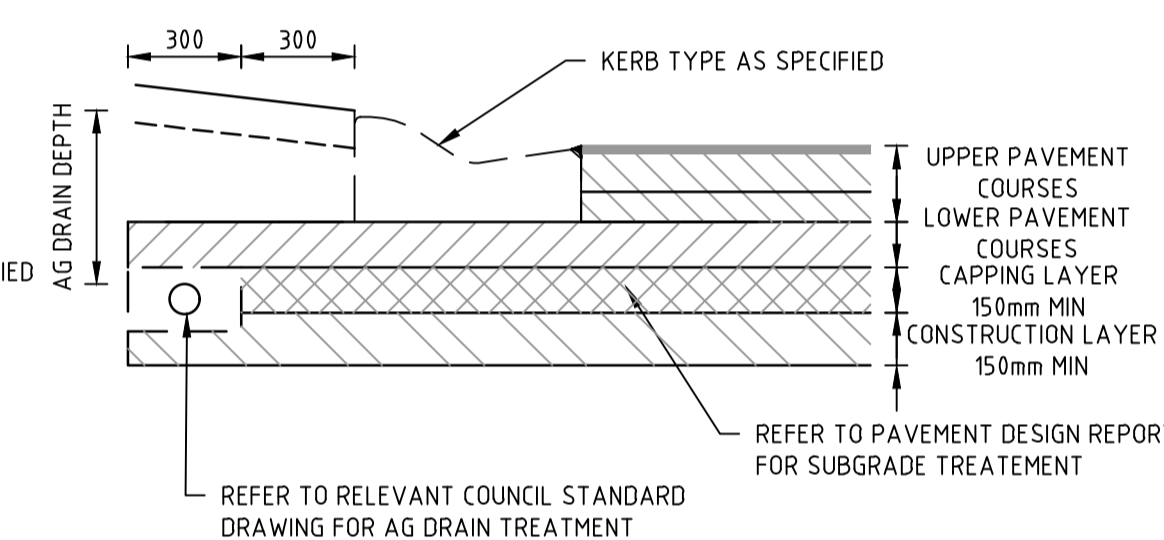
H 1:10
SCALE @ A1

0 0.1 0.2 0.3 0.4 0.5

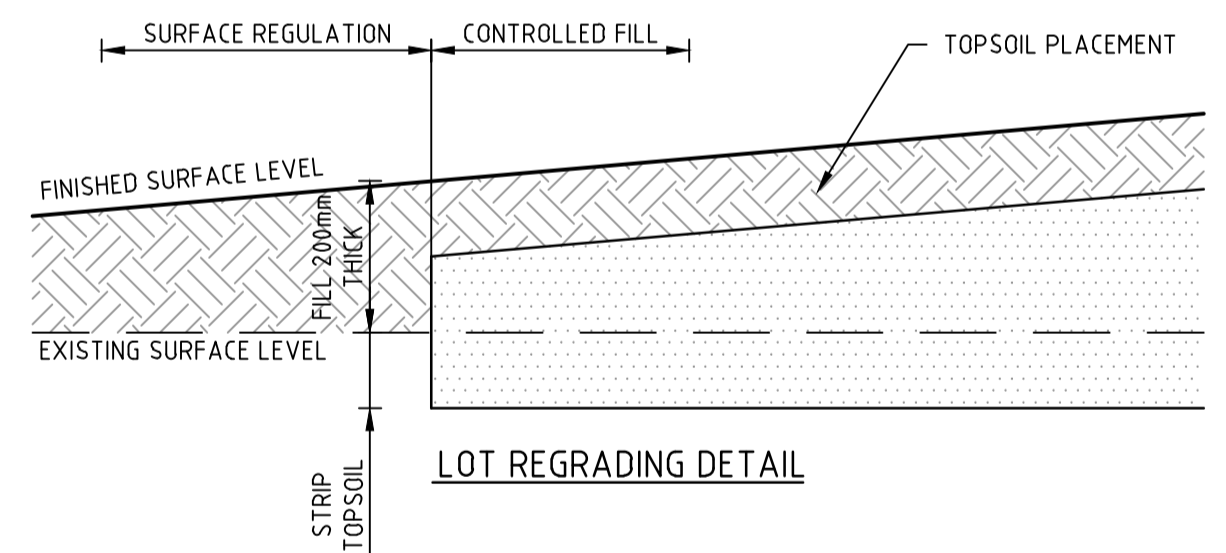
H 1:10
SCALE @ A1



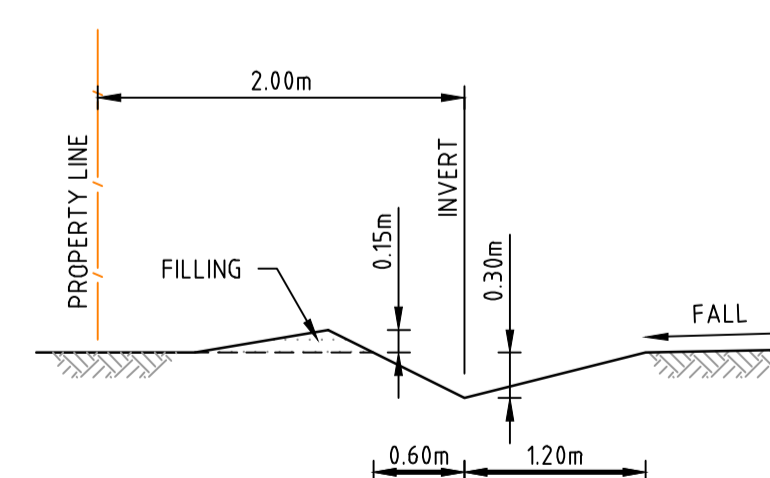
LIMIT OF WORKS CONCRETE EDGE STRIP & PAVEMENT INTERFACE DETAIL



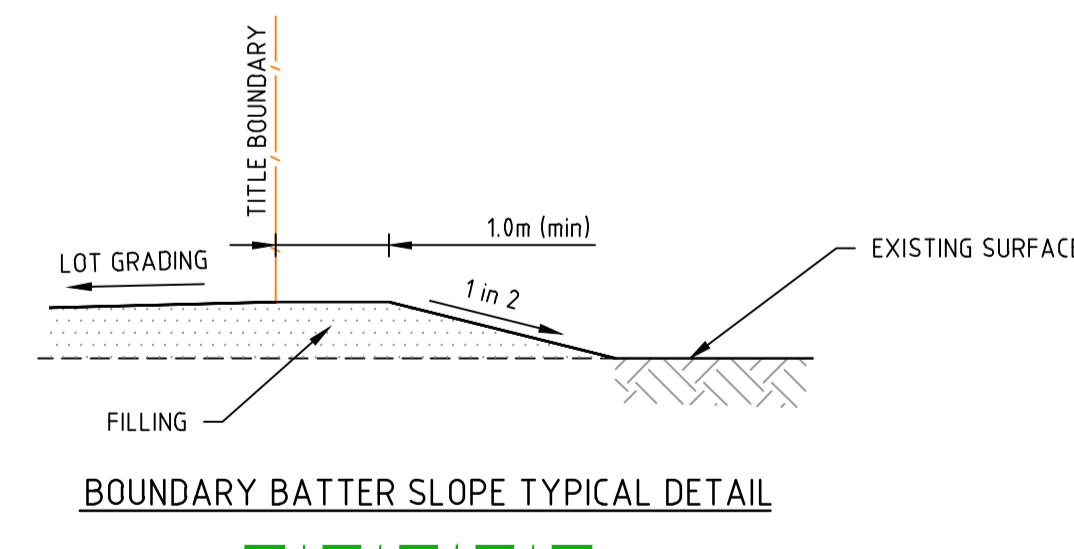
TYPICAL SUBSURFACE DRAIN DETAIL FOR EXPANSIVE SUBGRADE
REFER TO AUTHORITY REQUIREMENTS FOR SPECIFIC DETAILS



LOT REGRADING DETAIL



TYPICAL CATCH DRAIN SECTION



BOUNDARY BATTER SLOPE TYPICAL DETAIL

1	AS CONSTRUCTED	R.W.	08/11/21
0	ISSUED FOR CONSTRUCTION	M.T-S	12/03/21
B	UPDATED BOUNDARY BATTER SLOPE TYPICAL DETAIL	M.T-S	03/02/21
A	PRELIMINARY ISSUE	M.T-S	30/12/2020
Rev	Amendments	Approved	Date





System Certified

© Spiire Australia Pty Ltd All Rights Reserved
This document is produced by Spiire Australia Pty Ltd solely for the benefit of and use by the client in accordance with the terms of the retainer. Spiire Australia Pty Ltd does not and shall not assume any responsibility or liability whatsoever to any third party arising out of any use or reliance by third party on the content of this document.

spiire

414 LA TROBE STREET PO BOX 16084 MELBOURNE
VICTORIA 8007 AUSTRALIA T 61 3 9993 7888
spiire.com.au ABN 55 050 029 635



Designed
J.SHENG

Authorised
M.TOOMER-SMITH

Checked
P.COUNSEL
Date
12-03-2021

**KERANI HEIGHTS
STAGE 4
ROAD AND DRAINAGE
PAVEMENT AND TYPICAL DETAILS
CITY OF MELTON
PGG (PLUMPTON 2) PTY LTD**

AS CONSTRUCTED Drg No 305873CR700 Rev 1

TOP OF GRAVEL TRENCH TO BE LINED WITH NON-WOVEN GEOTEXTILE MATERIAL
AS SHOWN TO PREVENT FINE MIGRATION INTO THE TRENCH
PASSIVE IRRIGATION PIPES AND FITTINGS TO BE 90 MM DIAMETER PVC SEWER
CLASS
ALL PVC JOINTS TO BE SEALED WITH SOLVENT CEMENT
ALL GRASSED AREAS TO BE TOP DRESSED WITH 100 MM TOPSOIL AND SEEDS
AS SPECIFIED
SERVICE DEPTHS AND LOCATIONS ARE INDICATIVE ONLY
WHERE THE VERGE IS LESS THAN 4.2m (TYPICAL) A SPECIFIC DETAIL SHALL BE
SHOWN ON THE ENGINEERING DRAWINGS THAT RETAINS THE PRINCIPALS AND

REFER TO THE PASSIVE STREET TREE IRRIGATION GRAVEL TRENCH (KERB CUT SURFACE INFILTRATION) PROVIDED BY MELTON CITY COUNCIL WHO ARE RESPONSIBLE FOR THE STANDARD DETAILS. SPIIRE IS NOT RESPONSIBLE FOR THE WORK OF MELTON CITY COUNCIL.

SPiRE DOES NOT ACCEPT ANY RESPONSIBILITY FOR THE ACCURACY, ADEQUACY OR APPROPRIATENESS OF THE GRAVEL TRENCH (KERB INLET DIVERSION) DESIGN.
ANY QUERIES IN RESPECT TO THE STRUCTURAL DESIGNS SHOULD BE ADDRESSED TO MELTON CITY COUNCIL AND SENT TO SPiRE.



F	UPDATED DESIGN	L S	29.04.20
D	REVISED DESIGN - REISSUE	JMcL	30.11.18
C	REVISED DESIGN - REISSUE	JMcL	31.10.18
B	REVISED DESIGN	JMcL	09.10.18
A	PRELIMINARY ISSUE	HV	27.09.18
REV	DESCRIPTION	APP'D	DATE



Alluvium Consulting Australia
Pty. Ltd.
ABN 76 151 119 792
Lvl 1, 105-115 Dover Street
Cremorne Vic 3121
T 61 3 9421 2532
www.alluvium.com.au

MELTON CITY COUNCIL
PASSIVE STREET TREE IRRIGATION
GRAVEL TRENCH (KERB INLET DIVERSION)
CROSS SECTION

REVISION:	SHEET No.:	ORIGINAL SIZE: A1	SCALE: 1:10 (A1) or 1:20 (A3)
F	5	DATUM: m AHD (MGA z55)	

1	AS CONSTRUCTED	R.W.	08/11/21
0	ISSUED FOR CONSTRUCTION	M.T-S	12/03/21
A	PRELIMINARY ISSUE	M.T-S	30/12/2020
Rev	Amendments	Approved	Date



© Spiire Australia Pty Ltd All Rights Reserved



414 LA TROBE STREET PO BOX 16084 MELBOURNE
VICTORIA 8007 AUSTRALIA T 61 3 9993 7888
spiire.com.au ABN 55 050 029 635



Designed
J.SHENG

Authorised
M.TOOMER-SMITH

Checked
P.COUNSEL
Date
12-03-2021

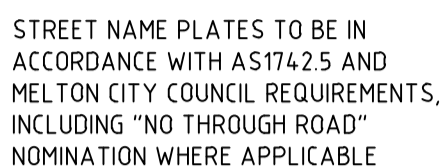
KERANI HEIGHTS
STAGE 4
ROAD AND DRAINAGE
PASSIVE IRRIGATION TYPICAL DETAIL
CITY OF MELTON
PGG (PLUMPTON 2) PTY LTD

AS CONSTRUCTED Drg No Rev
305873CR702 **1**

S1  G9-20 S6

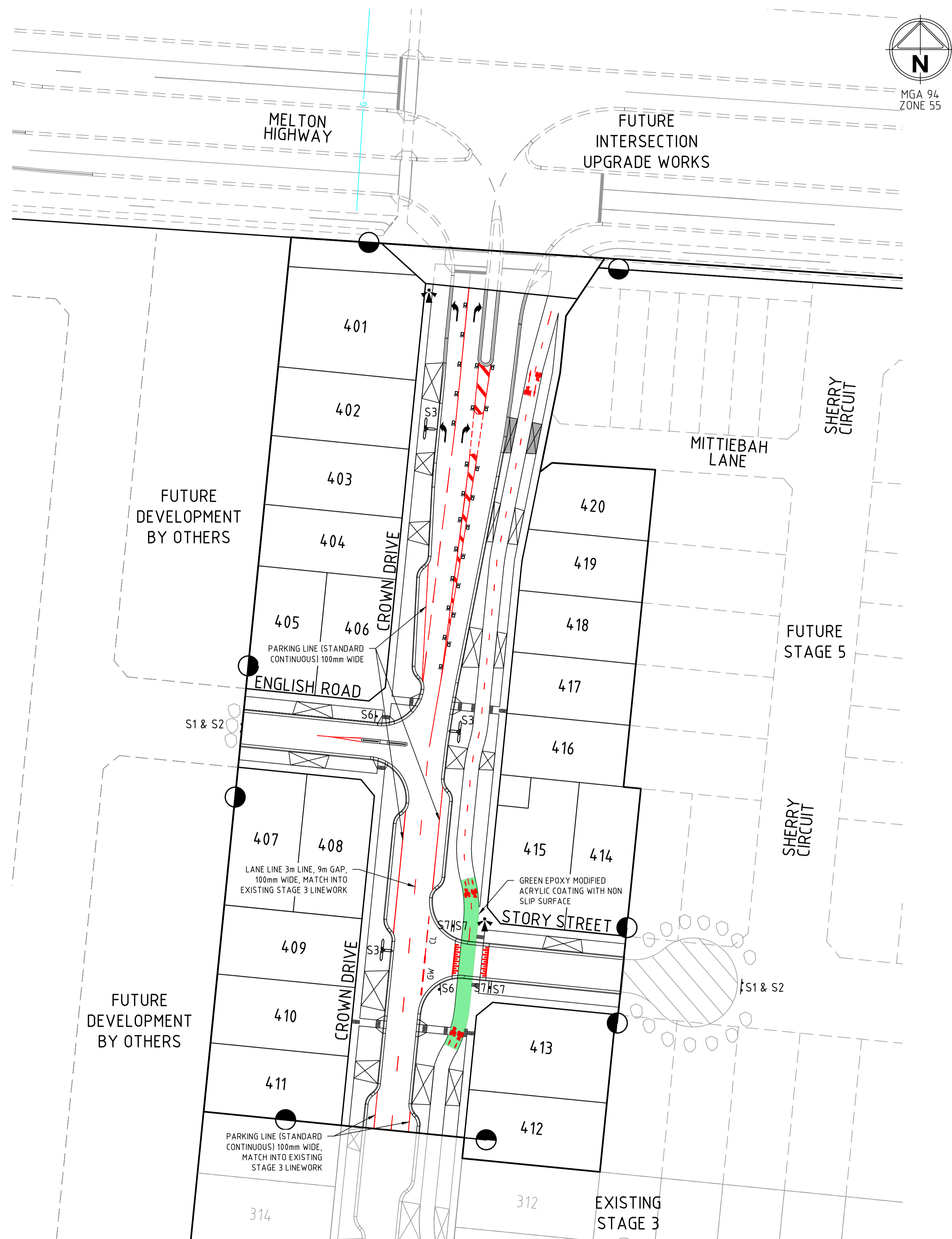
S2  D4-5 S7

S3  S8

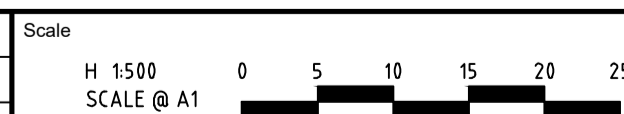


SYMBOL:	DESCRIPTION:	REMARK:
	PARKING & LANE LINE	100mm WIDE
	HOLDING LINE (GIVEWAY)	600mm LINE, 600mm GAP, 300mm WIDE
	CONTINUITY LINE (STATCON)	600mm LINE, 600mm GAP, 150mm WIDE
	TACTILE GROUND SURFACE INDICATORS (DIRECTIONAL)	AS PER COUNCIL STANDARD DRAWING AND AS1428.4.1
	SHARED PATH SYMBOLS	VICROADS TRAFFIC ENGINEERING MANUAL VOL.2 FIG. 18.19 & AS1742.9

NOTE: ALL PRAM CROSSINGS TO BE INSTALLED AS PER EDCM 403.



1	AS CONSTRUCTED	R.W.	08/11/21
0	ISSUED FOR CONSTRUCTION	M.T-S	12/03/21
B	UPDATED LINE MARKING	M.T-S	03/02/21
A	PRELIMINARY ISSUE	M.T-S	30/12/2020
Rev	Amendments	Approved	Date



© Spiire Australia Pty Ltd All Rights Reserved

This document is produced by Spiire Australia Pty Ltd solely for the benefit of and use by the client in accordance with the terms of the retainer. Spiire Australia Pty Ltd does not and shall not assume any responsibility or liability whatsoever to any third party arising out of any use or reliance by third party on the content of this document.



414 LA TROBE STREET PO BOX 16084 MELBOURNE
VICTORIA 8007 AUSTRALIA T 61 3 9993 7888
spiire.com.au ABN 55 050 029 635



Designed
J.SHENG

Authorised
M.TOOMER-SMITH

Checked
P.COUNSEL
Date
12-03-2021

**KERANI HEIGHTS
STAGE 4**
**ROAD AND DRAINAGE
SIGNAGE AND LINEMARKING**
CITY OF MELTON
PGG (PLUMPTON 2) PTY LTD

AS CONSTRUCTED	Drg No 305873CR800	Rev 1
-----------------------	------------------------------	-----------------