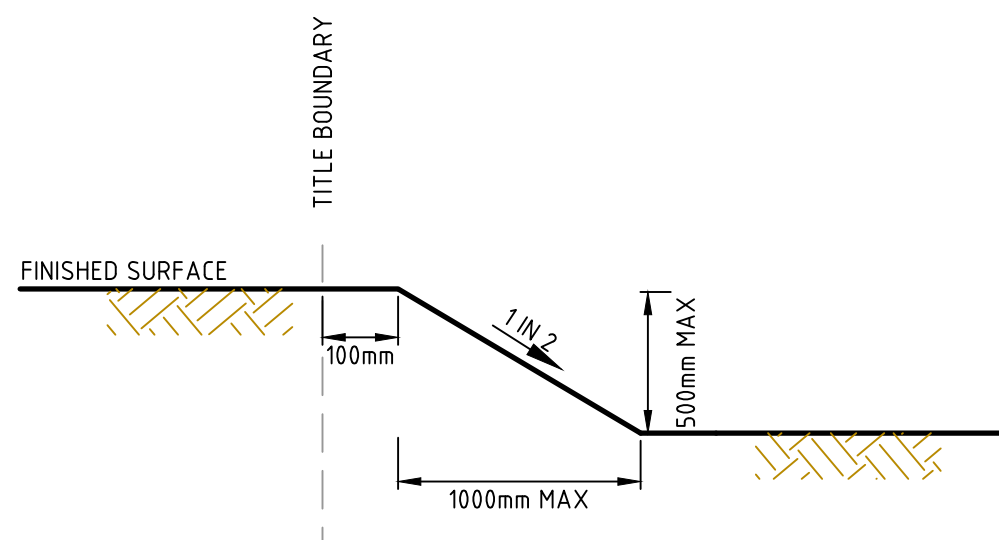
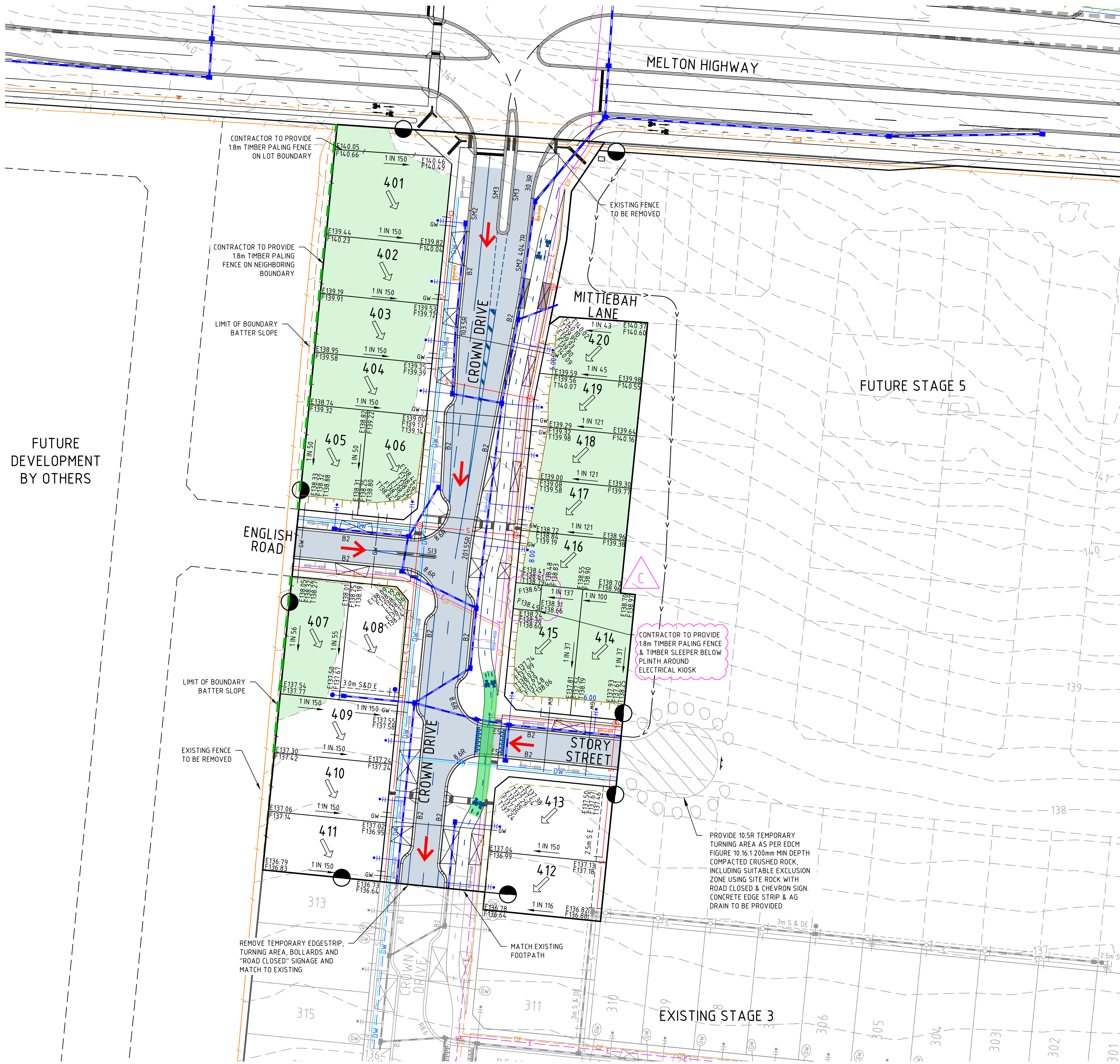


file name: 305873C_Sales Plan_1.dwg, layout: kerani heights C001, plotted by: Jerry Sheng
file location: G:\305873\DWG\ALAD plot date: 03/12/2020 9:02 AM, Sheet: 1 of 1, Sheets



BOUNDARY BATTER SLOPE TYPICAL DETAIL
BOUNDARY BATTER SLOPE UP TO 500mm
NOT TO SCALE

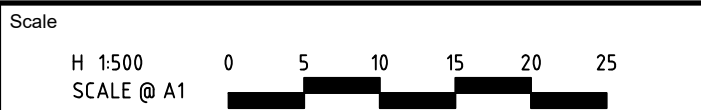
LEGEND

- EXCAVATION GREATER THAN 0.20m
- FILLING GREATER THAN 0.20m
- BATTER
- EXISTING SURFACE LEVEL E123.45
- FINISHED SURFACE LEVEL F124.68
- BATTER LEVEL (TOP/TOE) T124.80
- LOT GRADE 1 in 150
- BOUNDARY BATTER SLOPE

- NOTES:
1. DEPTHS OF CUT AND FILL AS MEASURED BETWEEN EXISTING AND FINISHED SURFACES.
 2. BATTER MAXIMUM IN FRONT OF LOT 4 METRES
 3. BATTER MAXIMUM TO SIDE OF LOT 2 METRES

NOTE:
EARTHWORK DETAIL SHOWN IS BASED ON PRELIMINARY DESIGN ONLY. THE EARTHWORK DETAILS ARE SUBJECT TO CHANGE BASED ON THE FINAL DESIGN AND COUNCIL APPROVAL PROCESS.

C	UPDATED ELECTRICAL KIOSK LEVELS	M.T-S	03-12-20
B	UPDATED LOT LAYOUT	M.T-S	01-12-20
A	ISSUED TO CLIENT	M.T-S	17-04-20
Rev	Amendments	Approved	Date



© Spiire Australia Pty Ltd All Rights Reserved
This document is produced by Spiire Australia Pty Ltd solely for the benefit of and use by the client in accordance with the terms of the retainer. Spiire Australia Pty Ltd does not and shall not assume any responsibility or liability whatsoever to any third party arising out of any use or reliance by third party on the content of this document.

spiire
1414 LA TROBE STREET PO BOX 16084 MELBOURNE
VICTORIA 8007 AUSTRALIA T 61 3 9993 7888
spiire.com.au ABN 55 050 029 635

POTTER GEORGE
Designed Checked
Authorised Date

**KERANI HEIGHTS
STAGE 4
GENERAL
SALES PLAN**
CITY OF MELTON
PGG (PLUMPTON 2) PTY LTD
PRELIMINARY Drg No **305873C001** Rev **C**