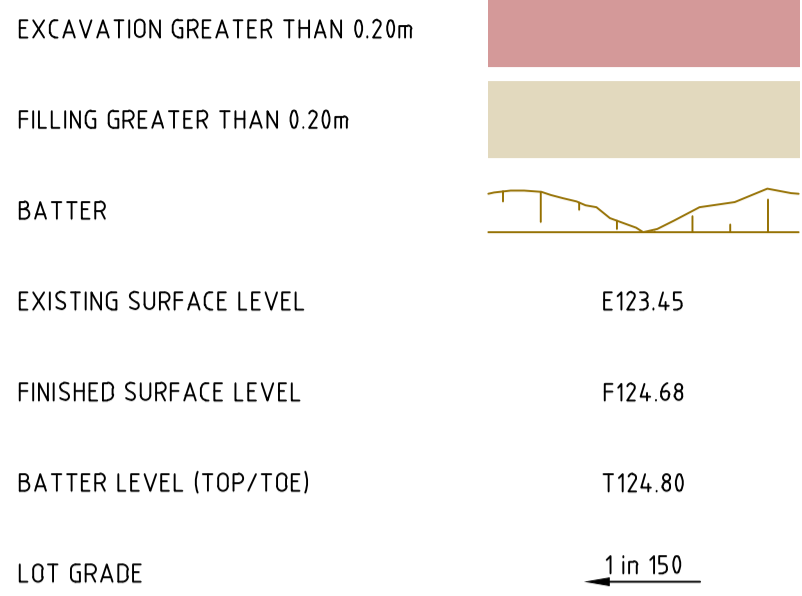
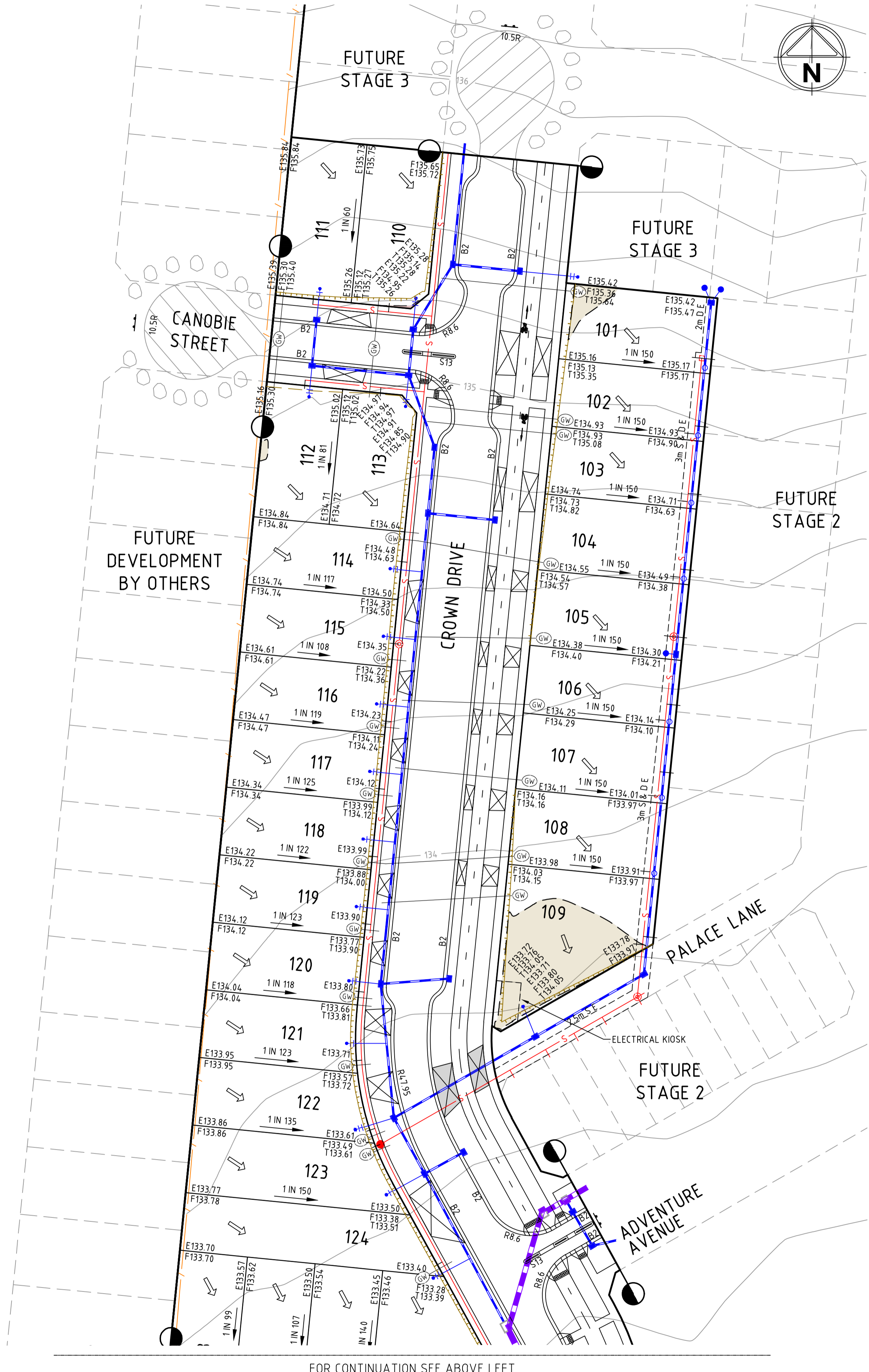
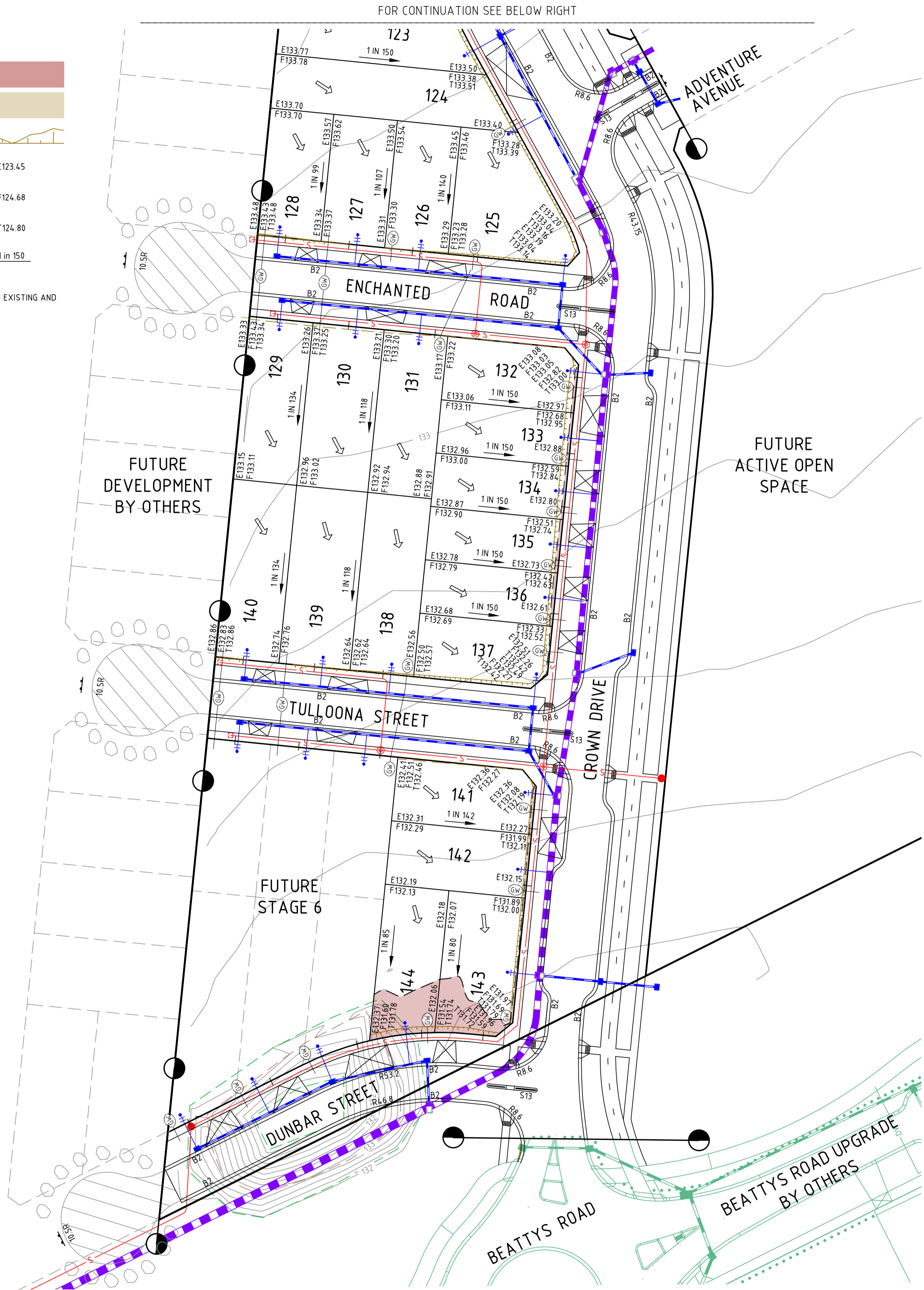


LEGEND

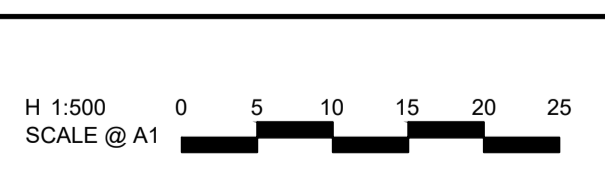


- NOTES:**
1. DEPTHS OF CUT AND FILL AS MEASURED BETWEEN EXISTING AND FINISHED SURFACES.
 2. BATTER MAXIMUM IN FRONT OF LOT 4 METRES
 3. BATTER MAXIMUM TO SIDE OF LOT 2 METRES



file name: 305536EW200.dwg layout name: EW200_01.dwg sheet 1 of 1 sheets

Rev	Amendments	Approved	Date
C	ISSUED TO CLIENT	M.R	24-01-19
B	PRELIMINARY ISSUE	M.R	01-10-18
A	PRELIMINARY ISSUE	M.R	24-09-18



© Spiire Australia Pty Ltd All Rights Reserved
This document is produced by Spiire Australia Pty Ltd solely for the benefit of and use by the client in accordance with the terms of the retainer. Spiire Australia Pty Ltd does not and shall not assume any responsibility or liability whatsoever to any third party arising out of any use or reliance by third party on the content of this document.

114 La Trobe Street PO Box 16084 Melbourne
Victoria 3007 Australia T 61 3 9993 7888
spiire.com.au ABN 55 050 029 635

Designed _____
Checked _____
Authorised _____
Date _____

**KERANI HEIGHTS
STAGE 1
GENERAL
SALES PLAN**
CITY OF MELTON
PGG (PLUMPTON 2) PTY LTD

PRELIMINARY Drg No **305536EW200** Rev **C**